

THE GLENFARG DEC 2002 NEWSLETTER



PUBLISHED BY GLENFARG COMMUNITY COUNCIL



***Season's Greetings
to all our readers***



**FOR ALL YOUR PRINT & DESIGN NEEDS
KINROSS 01577 863186 FAX 01577 862184**



HIGHLAND HORSEBACK SCOTLAND

BRITAIN'S LONGEST TRAIL RIDE

A 200 mile trail from the rolling hills of Aberdeenshire, to the spectacular scenery of the West Coast.

Fit and enthusiastic hunters and cobs.
The challenge of a lifetime!

Fiona and Ken Hamilton,
Easter Bodylair, Glass, Huntly, AB54 4XR
Tel/Fax 01466 700304
Email - highhorse@glenfarg.swinternet.co.uk

MAGNOTHERAPY

Are aches and pains stopping you or your pet leading a normal active life?

If so you should discover the secret of BIOFLOW HEALTHCARE magnets.

"Their magnetic properties are guaranteed for life and with the 60 day refund policy it has got to be worth it!"

For more information and free colour brochure call
ALICE MEE
(01577) 830 395

Independent distributor of Ecoflow Ltd
BIOFLOW is registered trade mark of Ecoflow Ltd

STRAITWAY

STRAITWAY

TM 'going the right Way'

*Your No1 choice for computers,
peripherals, supplies*

Apple computers
PC computers
Printers
Scanners
Digital cameras
Christian software
General software
Mobile phones
Stationery
Consumables

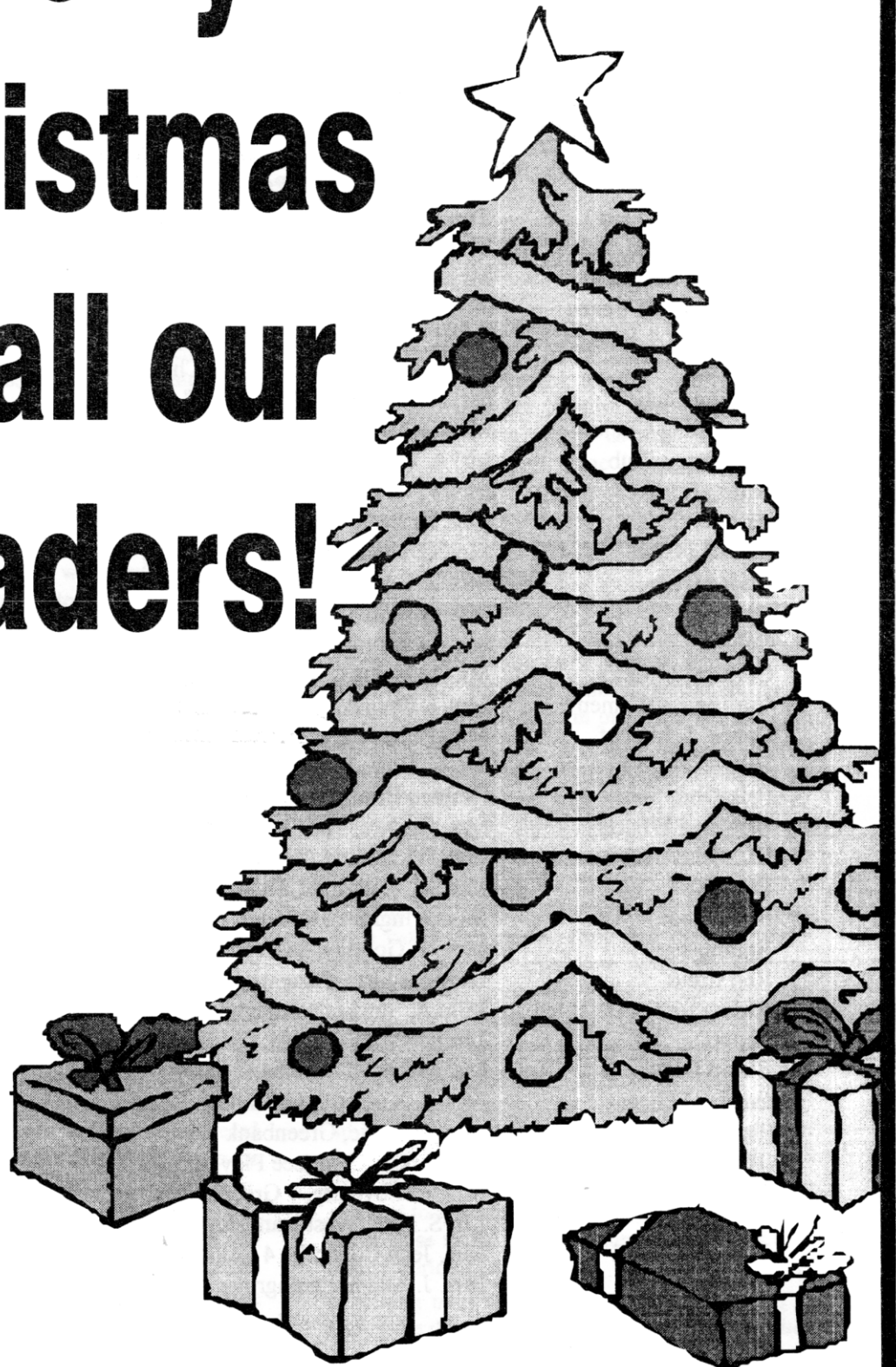
The telephone number to ring:

01577 830 820

e-mail: info@straitway.co.uk • web: www.straitway.co.uk

STRAITWAY, St. Clair Cottage, Greenbank Road, Glenfarg, Perth, PH2 9NR

**Merry
Christmas
to all our
readers!**



The views expressed by contributors to this Newsletter are entirely their own. Publication within this Newsletter does not imply that the Editor or Community Council agrees with, or supports, those views. Neither the Editor nor the Community Council will be held responsible for any factual inaccuracies, or incorrect inferences drawn.

| | | |
|---------------------|--|---------------|
| Editor | : Mrs. J. Macpherson, Lyndhurst, Ladeside | 830430 |
| Treasurer | : Mr. C. Murison, Plains Farm | 830255 |
| Advertising | : Mr. C. Murison, Plains Farm | 830255 |
| Distribution | : Mr. G. Smith, Post Office | 830201 |

ORGANISATIONS IN GLENFARG

| | | |
|---------------------------------------|--|---------------------|
| Perth & Kinross Councillor | Mrs. Kathleen Baird, Easter Clunie, Newburgh KY14 6EJ | 01337 840218 |
| Community Council | Chairman: Brig. D. Cameron, The Old Manse | 830394 |
| | Secretary: Mr. B. Patterson, 18 Elm Row | 830555 |
| Rev.K.Anderson | The Manse, Abernethy | 01738 850607 |
| Session Clerk | Mrs. H. Clark, 7 Elm Row | 830410 |
| Arngask School | Mr. R. Simpson, Headmaster | 830263 |
| Justice of the Peace | J. R. Cheape, Letham Farm | 830215 |
| Accordion & Fiddle Club | Mr. R. Robertson, "The Neuk", Drunzie | 830642 |
| Aerobics | Mrs. N. Matthew, Bellview, Church Brae | 830743 |
| Angling Club | Mr. R. Robertson, "The Neuk", Drunzie | 830642 |
| Babysitting Circle | Mrs. H. McLeish, 8 Elm Row | 830374 |
| Badminton Club | Mr. A. Clark, 3 Hayfield Rd. | 830246 |
| Ballet | Mrs. R. Webb, 23 Elm Row | 830622 |
| Beavers | Mrs. H. Deas, Greenbank Road | 830251 |
| Bowling Club | Mrs. C. Hayward, 3 Lomond Bank | 830387 |
| Bridge Club | Mrs. J. Gent, Cartref, Main Street | 830485 |
| Brownies | Mrs. A. Wall, 20 Greenbank Road | 830460 |
| Cubs | Mrs. C. Morton, Folda, Church Brae | 830210 |
| Curling - Men's | Mr. A. Jenkins, 12 Elm Row | 830453 |
| Curling - Women's | Mrs. I. Findlay, Struan Bank, Hayfield Road | 830441 |
| Dance, School of | Mrs. N. Matthew, Bellview, Church Brae | 830743 |
| District Nursing Assn. | Mr. G. Ross, School House | 830212 |
| Folk Club | Graham Brotherston (or Glenfarg Hotel) | 01383 738922 |
| Meals on Wheels | Mrs. Ogilvie, The Crest, Main Street | 830512 |
| Old Folks' Association | Mrs. J. Kirkland, 7 Birch Lane | 830514 |
| Over 60s | Mrs. M. Cumming, Duncrive | 830736 |
| Playschool | Mrs. J. Ingram, Belmont, Greenbank Road | 830353 |
| Rainbows | Mrs. V. Gourlay, 2 Greenbank Crescent | 830617 |
| Red Cross | Lady Maclean, Arngask House | 830311 |
| Riding for the Disabled | Miss A. Stocks, Smiddyhill | 830262 |
| Scouts | Mr. R. Morton, Folda, Church Brae | 830210 |
| Sheep Dogs | Mr. A. Reid, Lochelbank Farm | 830288 |
| Sunday School | Mrs. L. Kinnaird, Greenbank Road | 830337 |
| Tennis Club | Mrs. A. Imrie, Greenbank Road | 830378 |
| Toddler's Group | C/o Mrs. Ingram (See Playgtoup) | |
| Village Hall | Mrs. E. Coventry, 7 Greenbank Cres. | 830529 |
| Wine Club | Mr. S. Mee, Westdean, Hayfield Road | 830395 |
| Woman's Guild | Mrs. Jean Connolly, 4 Lomond Bank | 830200 |
| W.R.I. | Mrs. J. Adam, Larchgrove, Main Street | 830559 |

Editorial

I hope you all get as much pleasure as I have by reading Bob Bell's account of the Burn, and life in the village in those days. Now, as he said to me, we probably rush about our daily business without giving the burn a second thought. He suggested I edit it but, particularly as there is space, I make no apology for reproducing it in its entirety. I thought it might be nice to have a picture of the burn on the front cover this time.

Many thanks to Pam Kerr and Jean Connolly who, following my earlier request, kindly offered to help with the typing of the Newsletter. I haven't forgotten

you, ladies, but recently much more copy has been coming in either typed, so that I can scan it, or by e-mail, leaving very little to be done. Obviously I realise that not everyone is in a position to do this, so don't worry, and please keep sending in hand-written copy.

As ever, it doesn't seem like a year since I said this before, but nevertheless I wish everyone a very merry Christmas, and a happy, peaceful and healthy New Year. As someone once said to me "the wealthy bit will have to wait"!

Memories of the Burn, by Bob Bell

I was born in the grey stone cottage where the bridge crosses the Farg as it approaches the bowling green. It was said that if you stood on that bridge you could have one foot in Perthshire, one in Kinross, and you could give a "Scud on the lug" into Fife. The wall and the parapet were warm to the touch in summer, and I would run along its length and jump down at the old toll house. On the parapet or on the road I would always pause to gaze into the waters of the burn to see what trout were there and to see if one might be big enough to provide a breakfast. One dreaming boy walking the parapet stepped over the edge and crashed onto the stones below. He was lucky to escape with slight concussion and several stitches. On the downstream side a big ash tree grew on the bank bending outwards over the water, and on the upstream side grew a tall sycamore, every leaf spotted black by a fungus or invading insect. We collected its winged seeds and sent them, one by one, spinning over the water. In winter its leaves dropped silently, carpeting the bank or being whisked away in the water.

From my bed I could hear the chatter, the whisper, or the roar of the burn as the seasons changed; it was at its noisiest when the water was low and had to plot its course over and round the stones in the river bed, splashing against obstacles or murmuring in the deep against the wall. In the autumn, when in spate, all that could be heard was the roar of the falls a hundred yards or so up the burn. The big brown water was frightening, but in the darkness I would descend from the house and edge ever closer to the bank. Only in the moonlight when a beam struck the water surface could one see how fast it was moving. I would cling to a branch of a rowan transfixed by the

scene. Next day we would walk down to the bottom of the glen to watch the falls at Ayton Lodge, and to witness the sea-trouts' frenzied leaping, confirming that nature had kept her promise and the fish would soon arrive in the village as they had done for centuries. The trout came laden with countless millions of pink semi-transparent eggs, so the harvest of flesh exacted by hunting boys like me would be no more than nature, with her sense of balance, had allowed for.

I had an early inkling of the power of the burn. I am only a toddler standing on the pavement in front of our home; my mother and my big brother Jim are there. Jim is downcast, he is barefoot, he has a stick in one hand and hanging from the other a long grass stem threaded through the gill openings of five big speckled trout. On my mother's face is an expression mixing regret, love, and a vague amusement; she is saying "Oh laddie! did ye forget the Sunday school trip"? She was explaining how the charabanc for the event of the year had waited while friends had moved up the burn calling his name. They had failed to make contact, and the charabanc with its cheering children, its streamers and its balloons had reluctantly left without him. Jim remained silent. It is here that my memory fails me, but it is likely that he had a scone and jam, and returned to the burn. I was soon to learn how, in the excitement of the chase, all else can be forgotten. If a trout has sought refuge far under a rock, a bank or a tree root, and little fingers are trying patiently to move it to a holding position, the hunting boy, his head close to the rushing water, is lost in his own sweet world of the moment.

Catching trout by hand from a river like the Farg has to be the most primitive means of hunting them for

food, and maybe for pleasure too. Our forebears some 2000 years ago would surely have adopted this method, or else would have used rocks and turf to dam the river's flow, and then travel downstream collecting the stranded fish as we did when we were building a pool. Another, more futile method, was to attach a snare of single wire to a slim stick and to pass the noose over the head of a basking trout. In addition to trout there was a large population of eels in the Farg. One day I tasted jellied eels from a stall in Whitechapel Road in London and, finding them very tasty indeed I wondered why we had rejected them as food in Glenfarg. Eels could be guddled, but they were very slippery, squirming and tying themselves in knots. Spearing them with an open safety pin helped, but there was little incentive to struggle with them. When I caught one I would skin it and hang the skin up in the cellar until it was dry. I wrapped it round my wrist and secured it with thread. Some men wore a neat little wrist strap with two buckles where one would wear a watch so, in the jargon of today, I thought my strap was "Cool" !

Take off your boots and stockings or change them for a pair of cast-off boots without laces, toes, or the tongue {which would have been used in the making of a catapult}, wade out into the middle of the burn. Now your perspective has changed; as you walk against the flow, any disturbance clouds the water behind you leaving the track ahead always clear. You are on a path few have followed; you can view both banks from the centre. For centuries the water has been carving out this bed for itself, and now everything in it is within your reach. You may be scratched by the hawthorn or pricked by the bramble, but the bramble will reward you with the best berries out of reach of the walker on the bank. The willow fronds will brush your face, and the dull but homely alder will provide refuges for trout among its well-washed roots. Nettles and thistles on the bank cannot sting your legs. All the flora and fauna living there can be seen: the reeds and the rushes, the wild flowers, the nest sites of birds like the wagtail, the wren and the water crow are there under the banks. When you lift a stone you will expose many strange and fearsome looking creatures in different stages of their development from egg to insect, and when the water crow hops down from its stone to walk beneath the surface of the water you will have seen the food it seeks. In places where the banks are high, lined with trees or dense vegetation you will find yourself cut off from the rest of the world. Sit under an overhang on the bank and, unseen, you might doze, listen to the rain on the leaves above, or simply watch the creatures of the burn go about their business

unafraid. There may be a nest of the water hen out of reach from the bank. The eggs taste wonderful for breakfast. With your hands you can explore every possible refuge for a trout: under a rock, a stone, a bank, a wall or a tree-root. If you contact a fish clumsily it will flee, so a very gentle approach is essential. You will be amazed when a trout accepts your fingers as a harmless intrusion, so you must move it up, down, around or whatever to get it into position so that the fingers can close on the gills and the thickest part of the body. If the trout is large or is a sea-trout you must advance the other hand to control the lashing of the tail. The fish will emerge from the water peacefully, and will only struggle when aware that it is no longer in its natural element. The skill, of course, is in the touch. The English call it tickling, but that is misleading. It is really a gentle manipulation, a caress which disarms the victim. Ask the young lover who wishes to touch the object of his affection, but fears she might run away. Our catch was always eaten fried.

"The Burn" was not just the Farg, it was really whole river systems including the Eden, which ran southwards then east toward Fife, and others like the Slateford and the Kelty that fed the Water of May up by Path of Condie. Every water, however small, had its own native trout population, and we would walk many a mile to catch them. The Farg gathers in the marshes and springs between West Deuglie and Berryhill, and feeds the loch at that end. The loch is also fed from Craigfarg, from Woodside, and from a few other trickles on the opposite bank. Between the loch and Aberargie there are about twelve tributaries, and we knew every inch of every one of them.

It is well known that sea-trout, like salmon, return to spawn in the burn of their birth. It is the spate and the scent of it that sparks off the final stage of their migration, sending them far up to the clearest water and their spawning beds. Their passage is fast and frantic, as seen by their leaping at the falls at Ayton Lodge, at Fieldie and at the end of the path through the Earnside Bus Garage, where the falls had a drop of some five feet. But they need more than a flash flood. In early days, when we washed less and had just one tap in the house, the overflow from the loch was always flowing, and a spate would maintain the volume of water long enough for the fish to reach the most remote part of the remotest burn. So I have seen and caught sea-trout in the Lilywell Strand as far up the Deuglie road as Easterton road end, up past the old manse at Arngask just short of the cemetery, and in the Fieldie burn just short of the East Fordel cottages on the Wicks o' Baiglie road. They invaded

The Famous Bein Inn

Good Food – Good Music

Lunch and dinner served daily. Choose from freshly prepared traditional Scottish fayre, contemporary dishes and daily specials.



Tel: 01577 830216

Family Meals Birthdays & Celebrations

Club Gatherings Business Lunches Dinner for Two

**WIN a Superb Meal for 2 in our Free,
Easy to Enter Monthly Competition**

The Bein Inn, Glenfarg, Perthshire, PH2 9PY www.beininn.com



at Aberargie nr Bridge of Carn PH2 9NF

Offering Bar Lunches -
Suppers and Special Dinner Menu

FROM

Wednesday through to Sunday
Served in our Main Restaurant
OR CONSERVATORIES

Tom McConnell Owner & Chef
(ex Gleneagles-Carlin Maggies & Nivingston House)

Phone: 01738 850332

ASHLEY HOUSE

A care home with a difference

With the recent opening of the stunning new Ross wing, visitors can see round and get the flavour of the home and hearth comfort, Ashley House means four star hotel luxury at down to earth prices. The new bedrooms, individually decorated and beautifully draped in swags and tails, fitted wardrobes and en-suite facilities means generous space for personal items. With an additional lounge, and sitting areas, hairdresser salon, lift, small kitchens for residents to help

themselves or treat their visitors to snacks, tea or coffee at any time. Bathrooms with spa baths complete with Hydraulic seats are only a few of the many facilities added.

With the opening of the new Ross wing we can accommodate up to 29 residents. We want to maintain the tremendous atmosphere here by continually improving the quality of facilities, investing in on going staff training making Ashley House a care home with a difference.

18 Perth Road, Milnathort KY13 9X0 Telephone: 01577 864438 Jane Allan, Proprietress Registered with Tayside Regional Council

TYREFAIR

TYREFAIR LIMITED

Unit 11
Bridgend Industrial Estate
Kinross

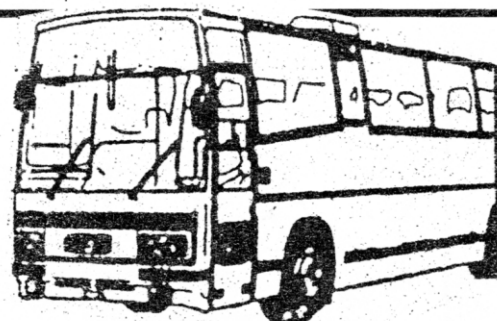
There is now a specialist tyre and battery dealer in Kinross that opens every day of the week, and has tyres and batteries at prices to suit you budget. **TYREFAIR** is a family business, with staff that have many years of professional experience in the tyre trade, and you can find them at **Unit 11, Bridgend Industrial Estate**, or telephone on **KINROSS 865656**. **TYREFAIR** welcomes trade account and offers the following goods and services

- New Tyres for Cars & Vans
- Guaranteed Re-Treated Tyres
- 4x4 Tyres for Business & Leisure
- High Performance Tyre Specialists
- Wheel Alignment
- Top Brand Quality Batteries
- Puncture & Vulcanised Repairs
- Number Plates made While-U-Wait

TYREFAIR has a comfortable lounge, where you can relax while the work is carried out and you can rest assured that we will treat your vehicle with the care and respect that you demand.

**WHY NOT CALL IN, OR TELEPHONE NOW
FOR MORE INFORMATION?**

KINROSS (01577) 865656



EARNSIDE COACHES

**TEL: 01577 830 360
FAX: 01577 830599**

**U.K. & CONTINENTAL TRAVEL
BUS & COACH OPERATIONS**

**15 - 76 SEATS AVAILABLE
INCLUDING
EXECUTIVE COACHES**

the Glendie burn up to Langside, the Candy burn, the Blair burn up close to Annie Lowrie's Fordel burn, Brunton's burn, and the burns at the Bein, the Binn and Pottyhill. In the clearing water these big fish were seen as ghostly-shapes in a mist. If we spotted a really big one we would follow it, running along the bank hoping to see where it came to rest and might be caught. Bill Deas, armed with a shrouded torch and a gaff; would wade up the burn, and would hook and land the fish trapped in the torch's beam. Notable boyhood catches stay in the memory, one being of a Saturday afternoon accompanied by my friend Bill Davidson from the smiddy, when we had 25 big sea-trout, the biggest weighing 31/2 lbs. No sooner had I laid out my share of the catch on the wall than the policeman came round the corner from the post office; he simply nodded to my mother and averted his eyes. Such was the nature of the feast that all were fed, and all were conspirators, because it was illegal to catch the fish by any means. I recall having a big catch with Bunt Deas at the top of the Fieldie burn. A full moon was shining and there was snow on the ground, but my arms were red and hot with the excitement of the chase. Not everyone realized that the trout in the loch itself were migratory, and the only feeder stream they could access was the infant Farg, so the fish that evaded the fly-fishers on the loch were received with thanks by barefoot village boys when the trout ran to spawn up and under the Deuglie road by West Deuglie Farm.

My passion for the burn remained into manhood. In 1952 I was home in Glenfarg; it was late October or early November and the sea-trout were up in large numbers and freshly run. Our first child was due on the last day of the year, so my wife's pregnancy was well advanced, but she was keen to witness the guddling. She was provided with gumboots and an old Burberry coat tied at the waist by binder twine. My sister came along too, and we went up Smiddyhill to Barleymill where I set to work. We had problems going to and fro across the burn in the darkness, but we had no mishaps. The excitement was sharpened by the fear that the law might be watching. My mother would have felt totally disgraced had I been caught, but I think I would have enjoyed defending the ancient art. I soon located several fish together under a tree root; I selected the three biggest and brought them safely to the bank. There remained the problem of returning through the village with the fish, but I had prepared for this. I asked my wife to remove the twine and open the coat. We strung the twine through the gills of the fish and tied it securely around the waist, the three fish dangling in front. We walked down home daring

anyone to ask for an explanation of the swelling under my wife's coat. Today Nancy swears we actually met the policeman but I am not sure of that.

I don't know if anglers fish in the Farg now, but they came from far and near then. We fly-fished in the loch and, because of the vegetation that bordered the burn making casting difficult, the bait used in the burn was invariably the worm. The bram'le worms were considered the best, dug from Sanderson's dairy dung heap about 100 yards along Deuglie road on the left. Jimmy Lackie who was a very popular deaf mute was a master of the art and, without saying a word, he could describe in exciting detail how he fought the big one and how it got away.

But the benefit of the water was not just its fish; the water was put to work in other ways. Near Shuttlefauld the Glendie burn was diverted along a lade at the foot of the big Candy field to drive the mill wheel at Glendiemill. I was too young to know what was going on there, but I certainly saw much activity with horses and carts and saw the mill wheel turning. Further down at Barleymill the burn flowed through what we called Spinky Den. It got its name from the "spinks" i.e primroses, which grew in profusion in the open grassy areas between the huge beeches. It was our favourite picnic spot. About a third of the way up, the burn was dammed to raise the water level and to send it along its lade to the mill. I remember the wheel well, but it was always still. It was the same at Hayfield. About 150 yards upstream from the cottages the water was controlled, not by a dam and waterfall, but by a man-made gradual slope up to a sluice gate which built up the water level and diverted it along the bottom line of the wood of huge spruces that led up to Smiddyhill. The water was channelled to a very big wheel in its pit behind the mill. The wheel was in good condition, but its life of service had ended. The old mill was a playground for us because we had access right up to the top floor. All the machinery was there: the fire at the bottom and the roasting grid at the top. There were wheels lying about, and we used to hack lumps of chalk out of them to draw peever boxes on the road for our game. About 200 yards further down, was the falls I have described where the water in front of them was diverted into the lade. A big sandstone block could be raised or lowered to control the flow of water. The lade ran straight alongside the sawmill to Hollybank, under the track and appearing briefly before disappearing under the road and under the cottages in front of the post office. It flowed through our coal-cellar, and I could climb into it and walk along a ledge for a few yards where the rats

lived to trouble us and eat the potatoes we stored in the cellar. The lade emerged again in front of the post office garden, and flowed just below road level to the joiner's shop where my father worked. The joiner's shop was owned by Bunt Deas's father, and his uncle Sandy. The wheel that drove the circular saw in the base of the shop was in a pit walled off from the road. I remember well the wheel splashing and turning before the water it had borrowed returned to the burn. In earlier days before I lived and before the railway came, the lade continued along the Ladeside, under the Great North Road, along the foot of the hill going up to Arngask, and northwards to feed the important Hay's Mill which was destroyed by fire in 1864. When the railway came the burn itself was diverted. From the point where it crossed under the main road it was held to a straight line by a wall alongside the railway down to the last house in the village. This stretch interested me because its trout population had not recovered from the burn's diversion. So the lade was blocked off and the pipe carrying the water that came down from Arngask can still be seen on the east side of the bridge. The Arngask Hotel was built where the old lade had crossed the road..

One day, while up the burn with three other unwashed boys of the parish, we were joined by a boy of similar age. He was Thomas Boyd, whose parents owned Glendeuglie House and estate. Although he did not look like us or talk like us we accepted him as a playmate. A few days later, however, he told us with great sadness that his mother forbade him from any further contact with boys like us. I did not see him again. But death and war are no respecters of rank, and Thomas eventually joined boys of the parish on the war memorial. His death came early in the war when the ship in which he was serving sank with all hands. He was a 19 year

old Midshipman who had followed his father into the Royal Navy.

BOY IN THE AUTUMN SPAWNING RUN

Arrows of advancing winter
Pierce the flesh and chill young bones,
Comb the bracken hiss through hedges
Crisp the moss on dry wall stones.

Probe the clamps that hold potatoes,
Wheat-straw hugging earthy fruits
Sweet the labour of whose picking
Bruised his back and bought his boots.

Stark in trees the brittle branches
Spring from boles as black as pitch
Night is filled with foxy voices
Rabbit smells within the ditch.

In the shadows by the river
Hearing geese that cross the moon
Hunting boy who reads the water
Knows the fish are coming soon.

Bullet-bodied wound for wedlock
Taut and muscled up they wait
Sensing nearness of the trigger
In the mountain water spate.

Spate that drives them frantic upwards
Black within the blackening night,
Reckless, plunging, brave, ecstatic,
In their frenzied spawning flight.

Knows that with the rain subsiding;
Knows that with the torrent's wane;
Knows he'll crook his fingers round them;
Knows he'll taste their flesh again.

BEIN INN - SCOTTISH MUSIC PUB OF THE YEAR 2002

Press release

David Mundell, owner of The Famous Bein Inn, Glenfarg, is in celebratory mood following winning the award "Scottish Music Pub of the Year 2002". The annual awards ceremony, hosted by the Scottish Licence Trade News, was held in The Glasgow Hilton Hotel.

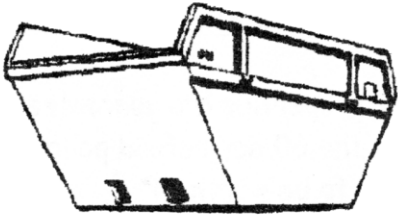
The award recognises great music bars, and commends those using music to serve their customers whilst ensuring the music is in keeping

with the type of bar and its customers. Entrants were asked to demonstrate commitment to music in the bar, and provide a consistently entertaining music programme.

The Bein Inn has had a fantastic line of live music, and the launch of a new web site has made it easier to find out who's on and when. This award is the culmination of three year's effort to establish the Bein Inn as Scotland's leading pub-based music venue.

Binn Skips

Binn Farm
Glenfarg
Perthshire
PH2 9PX



Tel. 01577 830833

Fax. 01577 830488

C A L E D O N I A • O R G

"common sense solutions in an uncommon world"

Two or more computers?

Network them to share files,
games, printers, etc.

Prices from £39.99

home and office networks
domain name registration
e-mail configuration
web site design & hosting
e-commerce design
database design
tutoring & coaching

melville terrace, glenfarg, ph2 9nn

tel: 01577 830 260

fax: 0870 125 3380

e-mail: info@caledonia.org

Stewart Funeral Directors

14 High Street, KINROSS KY13 8AN Tel. (01577) 864607



24 Hour Personal Service

EMERGENCY CALL OUT



TEL. KINROSS (01577) 864607

Under the personal supervision of Gordon and Alison Stewart

FUNERAL DIRECTOR ON CALL 24 HOURS - TELEPHONE KINROSS 864607

Robartsons OF MILNATHORT

21/23 New Rd, Milnathort,
Tel: (01577) 863342

" For all Garden, Farm and Country needs"
DOG FOODS - By WILSONS, OMEGA, SPILLERS,
HAPPIDOG, VITALIN and many more.
ANIMAL FEEDS - Free Range Poultry Feeds, Goat
Mix, Pony Nuts & Mixes.
CLOTHING AND FOOTWEAR - From MASCOT,
JOHN PARTRIDGE, HOGGS, HUNTER, ARGYLL
WELLINGTONS, Also Wet Weather Wear.

Full range of Garden Sundries, Wire Netting
Wheelbarrows, Weedkillers, Insecticides,
and Grass seeds at excellent prices.

"WE ARE HAPPY TO DELIVER AT
NO EXTRA COST"

Woodland Management and Landscaping

THE COMPLETE LOCAL SERVICE

Langton Vaughan Associates offer the full range of woodland management and landscaping services to farms, estates and private households throughout Perth & Kinross. Based at Aberargie, we are perfectly placed to visit you on site and supply the help you need - at a price to suit your budget.

- ▲ Full Woodland Planning & Design Service
- ▲ Complete Tree Planting & Maintenance Service
- ▲ Expert Advice on Forestry & Environmental Grants
- ▲ Landscaping & Fencing Service
- ▲ Fully Trained Professional Staff
- ▲ References Available Upon Request



**LANGTON VAUGHAN
ASSOCIATES**

WOODLAND, TREES AND LANDSCAPE SERVICES

Tel. 01738 850817

Fax. 01738 850818

**BAIGLIE COURTYARD, ABERARGIE,
PERTH PH2 9NF**

Having been runner up last year, David Mundell said about the win "It's great for the team here at The Bein to be recognised for all their hard work. This award adds so much credibility to what we're doing, and has been achieved with no compromise to the already successful food and accommodation side of the business."

The award recognises not only the uniqueness of The Bein Inn as a venue with its rock memorabilia bar, rock themed bedrooms and the Balvaird Restaurant, which includes purpose built stage, sound and lighting systems, but also places it alongside previous winners such as King Tut's Wah Wah Hut in Glasgow, and raises the profile of Perth as an international music venue.

David's long-term passion for music and his contacts within the industry have already established the Bein

Inn as a sought after venue for many international recording artists when they visit the UK. In recent months, musical giants such as Curtis Steigers, Glenn Tilbrooke of Squeeze, Jim Diamond and John Jorgensen have played to sellout audiences.

The appeal of the Bein Inn has been recognised by Douglas Ritchie, Chief Executive of Perthshire Tourist Board who said "This is an outstanding achievement by an outstanding music venue. The Bein Inn is one of Scotland's best places to come and enjoy live music". The Scottish Licence Trade News describes The Bein Inn as "One of the most unusual venues in Britain. An hotel which also serves as a rock museum and which regularly stages concerts starring legendary musicians".

Community Council

The following is an extract from the minutes of the meeting held on Monday 4th November 2002. Cllr K.Baird, PC Ishbel Hinton, Mrs Janet Croft and Mr Fred Whalley (Architect) were present by invitation, and one member of the public attended.

TRACKS Mrs. Croft advised the meeting that TRACKS proposal for the 'Glenfarg Project' had come about as a result of her initial discussions with the Community Council in relation to the potential development of the pavilion and changing rooms in Wallace Park. Subsequently TRACKS had identified that the land adjacent to the park may be a more suitable project.

Mr Whalley discussed how this area could potentially be developed for the benefit of Glenfarg, and that it would link the Duncricvie Road with the B996 and could also be accessed from Wallace Park via two timber bridges. The project area could be developed to include a meandering bridal path suitable for people, bikes and horses. Additionally it could include a seat and viewpoint area, large sundial, and could incorporate the plantation of new specimen trees through the woodland area. Some further thoughts included the development of a 'Wetland Interpretation' as part of a path to the B996 Main Street, which would include a raised 'board walk' and explanatory board.

The Chairman welcomed the presentation, but noted, however, that there may be issues in relation to lack of Community Council funds for this project, the potential labour requirement, problems with

vandalism given the damage that had been done to the Pavilion and changing rooms within Wallace Park, planning conditions and how this may fit with the Building Developer's own plans for the land.

Mrs Croft advised that in respect of the building development, TRACKS had been in touch with the Property Manager for Stephens, who had been positive. It was now a matter for the Community Council to consider initially, and, subject to an agreement, the matter could be taken back to the developer for further discussions. In relation to funding and labour, it was a matter for TRACKS to look for suitable sources of funding and to identify a suitable contractor.

There was a general agreement between the Community Council members that TRACKS should proceed with its investigations as to the viability of the project, bearing in mind the potential constraints/issues that had been mentioned.

Police Report Police Constable Ishbel Hinton was welcomed to her first Community Council meeting in her role as Community Liaison Constable. She advised that in the time since the last meeting there had been two housebreakings within the Village, and that a person had subsequently been traced and property recovered. The issue of the vandalism and drinking within Wallace Park was discussed, and it was noted that the Police were aware that this was an ongoing problem and one that they were looking to address.

Wallace Park It was reported that the Pavilion within

Wallace Park had finally been removed, and that the changing rooms had once again been boarded up, after having been broken into again. It was acknowledged that thanks were due to Cllr Kathleen Baird for her liaison with Perth & Kinross Council, and also to Mr Malcolm Hill at Perth & Kinross Council for his assistance.

The continuing problem with drinking within Wallace Park, and the associated problem with the danger of injury to people and animals from broken glass was noted. The question was raised as to whether the enforcement of the ban on drinking alcohol in public could be extended from such areas as Milnathort to include Glenfarg.

The Chairman noted that the burn within Wallace Park remained full of rubbish, and that the water was flooding out onto the playing field when there was rain. Cllr K. Baird advised that this remained on the list to be dealt with as part of the Council's maintenance project.

Treasurers Report Cllr Murison updated the meeting on income and expenditure since the last meeting. It was noted that Lady McLean had declined the offer of £50 per annum for the storage of the marquee. She had thanked the Community Council for their thoughts on the matter, and had suggested that the sum be donated towards the Glenfarg Newsletter.

Avenue Drainage Correspondence between Cllr C. Campbell and Mr John Crawford was circulated. The Chairman noted that the contents of the letter received from Mr Crawford in relation to the problem with the drainage along 'the avenue' appeared favourable. Cllr A. Curtis advised that Messrs. David Ismail's and John Crawford's intention was to have a drainage contractor look at unblocking the land drains; and to dig a trench across the adjacent field in order to take water away from the avenue.

Trees, which are leaning over within the avenue, are in need of felling. Permission is being sought from Perth & Kinross Council to allow those that are felled to fall into the school property.

It was also noted that there was increased water present within Hayfield Road, and it was considered that this may have worsened as a result of the more recent construction of the nearby 'Gallup' within the area.

Dates and times of future meetings

Meetings for year 2003 are to be held on the following Mondays: 6th January, 3rd March, 12th May, 30th June (avoiding July), 1st September, 3rd

November.

The AGM is to be held on Monday 24th of March. It was agreed that the commencement of all future meetings should be brought forward to the earlier time of 7.30 p.m.

Elections 2003 Cllrs C. Munson, C. Meldrum and A. Curtis are due to retire by rotation in the coming year, and are eligible to stand for re-election.

Marquee Repairs Cllr C. Campbell reported that it might cost between £250 and £500 to undertake the stitching repairs to the marquee. The Chairman suggested that maximum-budgeted repairs should not exceed £300, however in the event that the damage was more severe, a maximum discretionary figure of £500 should be allowable. There was general agreement to the Chairman's proposal.

Recycling Cllr C. Campbell advised that there was no further update on this issue.

Village Hall Restoration Mrs Sue Cheape reported that it was considered, in view of the growing population within the catchment area of Glenfarg, that the Village Hall might now be too small to accommodate the various groups who wished to use it. As such it had been considered that a new building might now be more appropriate, situated at a suitable location within Wallace Park. There was a general consensus from the Community Council members that they were not directly opposed to the plan, however it was requested that the Village Hall Committee keep the Community Council advised of any future developments.

Any Other Business

Calor Scottish Community of the Year 2002 Cllr B. Patterson advised the meeting that he had made contact with the relevant department that was dealing with the applications, and had been advised that Glenfarg's application had been unsuccessful. He had been informed that there had been an increased number and quality of applicants in this current year, which had resulted in the judging being very difficult.

Gates & fencing within Wallace Park It was noted that new fencing and gates had been erected at the car park entrance to Wallace Park. Enquires are to be made as to whether the gate is to be locked, as this would restrict vehicle access for events such as the Glenfarg fete.

Date of the next meeting Monday 6th January 2003

Have yourself a merry little Christmas ...
with a superb natural Christmas Tree
from your local supplier

Let us take some of the hassle out of Christmas for you. As one of the area's top forestry consultants, we have managed to negotiate a super deal on natural Christmas trees. This ensures that you get the best possible tree at the lowest possible price.

WHAT TO DO NOW

It's your choice, either drop in (we're just 1/2 mile up the Dron Road) and pick up the tree of your dreams or give us a quick call on the number below and we'll deliver it to your home FREE of charge.



NORDMANN FIR

This is a non-needle drop tree, with an excellent traditional Christmas tree shape.

£17.50

Small (3-4ft)

£23.00

Medium (5-6ft)

£29.50

Large (7-8ft)



**LANGTON VAUGHAN
ASSOCIATES**

WOODLAND, TREES AND LANDSCAPE SERVICES

Tel. 01738 850817

www.langtonvaughan.co.uk

BAIGLIE COURTYARD, ABERARGIE, PERTH PH2 9NF

Public Hall Association

- ❖ **What are the needs of the village regarding use of the Village Hall?**
- ❖ **Will they be same in 10 years time?**
- ❖ **Will the village grow in numbers?**

A proposal has been made regarding the feasibility of building a new hall in a new place - Wallace Park.

What do you think?

Please send your thoughts and suggestions in writing to the Editor, by 15 January 2003, and depending on response, they may be published in the next edition.

The Hall committee would like to thank Sylvia Wall and her helpers for the excellent Craft Fair in September. It was a superb display of local talent, and a thank you is extended to all the exhibitors. The wonderful quilt made by Sylvia and Janette Kirkland was raffled, and won by Eliza Lindsay of Perth — a member of the Perth Quilters. The Craft Fair made £530, and all proceeds will go towards the extension fund.

At the Hall meeting in August it was agreed that the whole sum of £5873.15 made during the Jubilee weekend will be put into the extension fund. This now stands at £13,632.66, of which £10,000 has been put into a fixed interest account for a year. On the notice board in the hall is a breakdown of the income and expenses of the Hall Extension Fund.

During December new safety linoleum will be laid in the kitchen, passage to, and in, the downstairs toilet,

as well as on the staircase. The damp area in the main hall will be done in January, and painting of the main hall has been put on hold. The wooden ramp at the main entrance of the hall will be replaced soon, thanks to help from Playgroup.

The hall committee, in conjunction with Glenfarg Scout Group will be organising the local Burns Supper, which was such a success last year. All proceeds will be divided between Glenfarg Scout Group and the Hall Extension Fund. This will be held on Friday 24 January - buy your tickets early to avoid disappointment.

The next Hall meeting will be on Monday 20 January 2003.

Red Cross — Glenfarg Centre

Coffee morning It's always pleasing to report a successful fundraising event, and this year's Coffee Morning, Sale and Raffle was no exception. £977.43, after expenses, is a magnificent amount, and would not be possible without the generous support from friends and neighbours in and around the village. The work of the Red Cross at home and abroad relies on such community events, large or small, held throughout the country. It is gratifying for those of us who are local volunteers to know we can rely on such support.

We were delighted to welcome Dr. Helen Bath, Operations Director for Mid-Scotland, who opened the Sale. She obviously enjoyed the opportunity to meet Red Cross members, and as many supporters as

possible throughout the morning, and is indeed a most enthusiastic newcomer to the Red Cross scene in Scotland.

Still on the theme of fundraising we have had communication from Perth Office relating to a Fashion Show to be held on Tuesday 17 December at the Queen's Hotel, Leonard Street Perth at 7pm. As the Perth Red Cross Shop has recently been making headlines as an award winner for the outstanding quality and variety of its stock, it seems appropriate to hold such an event with clothes from the shop in Kinnoull Street being modelled. There will also be a Silent Auction and Raffle. Tickets, priced, £5, are available from the Perth Office (01738 622474) or the Red Cross Shop in Kinnoull Street, Perth.



ELSTON LANDSCAPE

We provide a comprehensive professional landscape service, from design to creation for all sizes of garden.

TREE & SHRUB PLANTING,
SEEDING & TURFING

PATHS, PATIOS &
DRIVEWAYS

HEDGE CUTTING
PRUNING & TREE
SURGERY

FENCING, TRELIS
& PERGOLAS

DON'T BE STUMPED!

Unightly Tree Stumps in your way?
Have them ground away by your local specialist.

Contact: KEITH ELSTON
TEL/FAX: 01738 850742
WE ARE 'GROWING PLACES'

GROWING PLACES

Good Planning, Design and Selection are a vital part of a planting scheme. The use of mature trees & shrubs can create an instant effect of established shrubberies, trees and screening.

ORGANIC COMPOST &
MULCHIES SUPPLIED &
SPREAD.

GROW A FENCE

WITH SO MANY VARIETIES OF HEDGING TO CHOOSE FROM, YOU CAN HAVE A COLOURFUL & NATURAL FENCE.

Order your Tree for the Millennium.

Contact Keith on: 01738 850742
To discuss your design & planting requirements

For Quality, Convenience and Value

ROSS PICTURE FRAME MAKERS

Woodmarch
by Scotlandwell

20 Years experience in all aspects of framing.

Bespoke and contract work

Competitive prices. Easy Parking.

☎ 01592 - 840345

G.J. SMITH

**GLENFARG
POST OFFICE
&
GENERAL STORE**

tel: Glenfarg 830201

**NEWSAGENTS
MORNING ROLLS
LICENCED GROCERS**

**Newspaper delivery available
within Village
6am - 8pm**



BOSCH



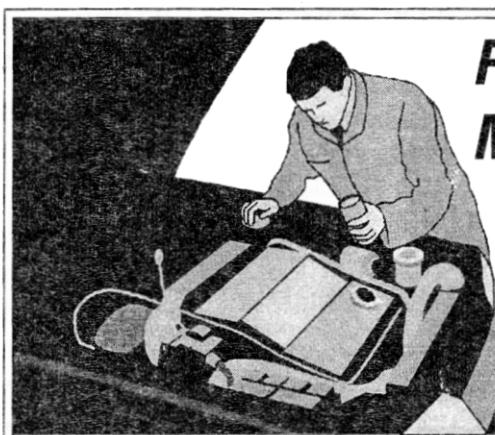
M.O.T.

MAIN STREET
GLENFARG

M.O.T.

Petrol, Diesel + Catylist

Six days by appointment/Free re-test



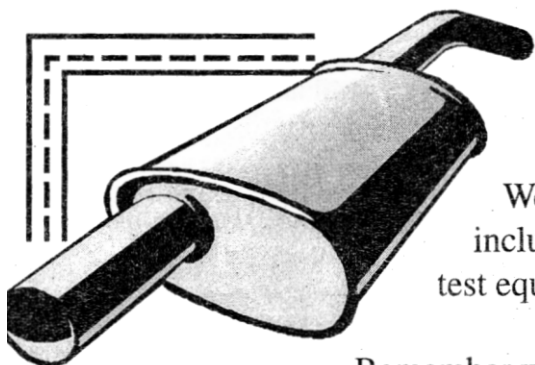
Recently appointed **BOSCH** **MotorPlus Agent**

- ENGINE MANAGEMENT
- ABS BRAKE SYSTEMS
- COMPUTER AUTOBOXES
- AIR BAGS

} Can now be tested and repaired using our latest Bosch on-stream data recorders. Full Bosch Factory back-up service.

DON'T FORGET ...

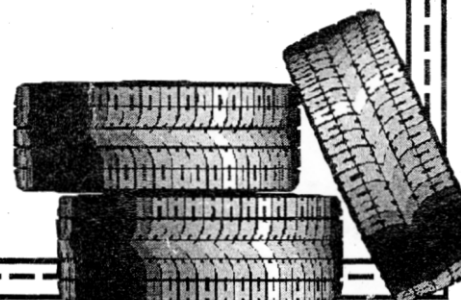
- All mechanical repair work and welding carried out
- Servicing
- Only top quality branded parts
- Recovery service



Tyres & Alignment

We can now offer full steering Geometry Checks including four wheel alignment using the latest Halogen test equipment.

Remember we can still match or even beat the 'fast fits' on many tyre and exhaust prices. e.g. NON 185/65x14 MONDEO/VECTRA from £36.00 inc. fitting and balance.



Phone for a fast and friendly quote.

01577 830 633

Arngask Guild

Warmest Seasons Greetings to all our members and friends. Wishing you a Happy Christmas and a Very Good New Year. The syllabus for the rest of the Session is as follows:

| | | | |
|--------------------------|---|---|------------------|
| 17th December | Guild Christmas Party | | 7.00 pm |
| 21st January | AGM | Getting to Know You!! | 7.30 pm |
| 4 th February | Plants of the Bible | Speaker - Mrs Renton | 7.30 pm |
| 11th February | Spring Meeting - Auchterarder Parish Church Hall | | 2.00 pm |
| 18th February | Romans in Perthshire | Speaker - Mr Mark Hall | 7.30 pm |
| 4 th March | Board of Social Responsibilities BRING AND BUY EVENING | Mrs Brenda Fraser - Asst. Div. Manager, and Mrs Joanne Chin - Service Manager at Belmont Castle, Meigle | 7.30 pm |
| 7 th March | World Day of Prayer | | |
| 18th March | Perth Speakers Club | Speaker - Mr Bruce Fummey | 7.30 pm |
| 21st March | Annual Council Meeting St Matthew's Church Hall | Speaker — Rev Kay Gilchrist, CHAS | 2.00 pm |
| 29th March | Guild Sale and Coffee Morning Church Hall | | 10.00 - 11.30 am |
| 5th April | Keith Lodge Coffee Morning –Scone New Church Hal | | 10.00 - 11.30 am |
| 8 th April | Faith Supper and Scottish Night | | 7.30 pm |
| 20th May | Summer Outing | To be arranged | |
| 5 th June | Summer Meeting - Scone New Hall | Speaker - Rev James McDonald | 7.30 pm |
| 14th August | Garden Party - Gask Church Hall | | 7.00 pm |

Arngask School

Life continues to be busy in and around the school. All the pupils are now well established in their respective classes, and in most cases good progress is being made. We continue to be very aware of the link between positive behaviour and achievement, and as such it is nice to report on a growing number of pupils from all classes who have received "House Point Certificates" this term. The most recent winners were: P1-2, Moray Swanson and Heather Sturgeon; P2-3, Lucy Brown, Jemma MacGregor and Carol Andrew; P4-5, Emma Brechin, Cameron Nicol, Hannah McLaughlin and Christopher Ness; P5-6, Amy Peacock, Christopher McLeish, Hannah Whiting and Greig Marsden; P7, Janey Brechin. All points gained for positive behaviour are noted, and

top 'scorers' will be rewarded at the end of session with the medals, kindly donated by funds from the local Community Council.

Shield winners for making greatest progress and effort during the month of October were James Bernardini, Carol Andrew, Anna Gourlay, Grant Hay and Callum McLaughlin.

At long last work is almost completed on the school playground. The additional area of tarmac was in place just in time before the wet and muddy month of November, much to the relief of parents and teachers fed up of mud covered school clothes. Now we just have the small triangle of grass at the car-park end, which will be paved around the sheds, leaving a

small area which we hope to transform into the school garden next spring. Our new playground seems to have attracted greater numbers of former pupils, especially those of the skateboarding fraternity. We all realise that there is little we can do to stop this happening at week-ends and during the evenings. In all honesty we don't have a problem with these 'visitors' using a safe area as their playground. The only problem has been an increase in litter and debris lying around eg. wooden lamps. We have also noted for the first time early signs of vandalism in the form of 'graffiti'. This has been reported to the police, but I would prefer to see those using the area doing their own policing and helping to keep the playground tidy and safe for all. Treat the school area with respect and we can all enjoy it happily together.

This term primary 7 have been visited by a Community Police Officer for a talk on drugs. He showed the class trays of pretend drugs, and told us

stories about what they can do to us. On the 4th November we all went to Abernethy to see a play about drugs. We played a series of games that were related to the play. We got into pairs and played games where you copied each other and had to work together as a team. Everybody enjoyed it, and we thought that the message about don't take drugs got through very well. By Maggie Henderson and Scott Deas

Perth Academy Maths Challenge On the 12th November P.7 pupils went to Perth Academy for the annual Maths Challenge with pupils from 5 other primary schools. There were 6 people on each table and we played lots of games. We played Pentominoes, Noughts and Crosses and the Relay game. When you won a game you would get a little token. There was a prize for the team with the most points. It was a good chance for the pupils to see the school they could be at this time next year. By Emily Milne and Callum McLaughlin.

WRI

The old (mainly male and Scottish-driven) adage that pasta is "jist biled breed" was thoroughly disproved by Mrs Lyn Wilsher at Glenfarg's October meeting as she illustrated her talk on the subject with a series of tasty and tempting dishes which demonstrated pasta's wonderful versatility. The members scoffed the lot with great relish, and will no doubt be cooking up a storm in the weeks to come.

Mrs Jenny Adam kept order, and Mrs Andja Scott proposed a well-deserved vote of thanks. Competition results -

| | | | |
|-------------------------------|------------------------|------------------------|-----------------------------|
| Culinary Collage | Mrs Ursula Stewart | | |
| Individual Pasta Salad | 1 Mrs Alison Messenger | 2 Mrs Liliias Johnston | 3 Mrs Ursula Stewart |
| Flower of the Month | 1 Mrs Liliias Johnston | 2 Mrs Margot Moran | 3 Mrs Helen Quartermaine |

Despite the no-show of this month's speaker (November) the ladies of Glenfarg nevertheless spent a pleasant evening with a companionable supper followed by an impromptu concert, ably conducted by President Mrs Jenny Adam accompanied by Mrs Andzia Scott at the piano.

Competition results -

| | | | |
|-----------------------------|--------------------|------------------------|------------------------------------|
| Decorated Flower Pot | 1 Mrs Helen Mair | 2 Mrs Ursula Stewart | 3 Mrs Liz Yull |
| Toffee Apple | 1 Mrs Margot Moran | 2 Mrs Liz Yull | |
| Flower of the Month | Mrs Sheila Harley | Mrs Helen Quartermaine | Mrs Liz Yull & Mrs Margot Moran |

In December the members will be revisiting their youth at the pantomime in Dunfermline on the 7th, and on the 12th they will be enjoying a grownup Christmas Party. In January, the speaker will be Mr Jimmy Douglas, known to many of you in the village. Visitors and new members are very welcome - please phone Mrs Jenny Adam (830559) for any information.

RENAISSANCE

CURTAINS AND ACCESSORIES
INDIVIDUAL & CREATIVE, SOFT FURNISHINGS
HANDMADE TO REQUIREMENTS
FABRICS & ACCESSORIES

Open 10.am - 4.pm Mon - Sat.
BackDykes Abernethy, Perth. PH2 9JY
Telephone: 01738 850806

DUNCAN McINTYRE

Builder and Slater

TIME SERVED TRADESMAN
FREE ESTIMATES
FOR ALL BUILDING WORK
SLATING REPAIRS

TELEPHONE KINROSS 864222

FED UP WORKING FROM HOME?

- Low Cost, Well Appointed Furnished Offices
- Excellent Commuting Location
- Free Use of Boardroom
- Excellent Facilities
- Flexible Terms
- Ideal For the Small or Start-up Business



To View, Please Call Ron Henry On 01738 812120
Bridge Of Earn Business Centre, Dunning Street, Bridge Of Earn, Perth, PH2 9AA

For all aspects of



PIANO TUNING

and repair, call -

David R. Watt
(01577) 830345

Letham Farm Glenfarg Logs

Genuine hardwood logs, by the bag or bulk
Logs cut, spilt and delivered to suit individual needs
Discount for larger orders, bulk, collection and return of sacks

Log splitter for hire

For further details ring Ewan Cheape
Glenfarg 830 349

VETERINARY SURGEONS

CAMERON & GREIG, MRCVS

'Ardmohr'

Stirling Road

Milnathort

Telephone: Kinross 863494

SURGERY HOURS:

Monday - Friday 9.00 - 9.30am

Monday - Friday 2.00 - 2.30pm

(open surgeries)

Monday - Friday 5.00 - 6.00pm

(by appointment)

Sat 9.00 - 9.30pm

Large and Small Animals
24 hour Emergency Service



ALPHAVET VETERINARY CENTRE
62 MUIRS, KINROSS

THOMAS A. & SUSAN J. WILSON B.V.M.S. M.R.C.V.S.




For a caring professional service for all domestic pets

TELEPHONE 01577-863328

E-mail - alphavet@globalnet.co.uk

Web Site - <http://www.users.globalnet.co.uk/~alphavet/>

Still Scotland's 1st and only Veterinary Practice Web Site.

 **CONSULTATIONS by APPOINTMENT**

| | |
|------------------|---|
| Monday to Friday | 9.00 a.m. to 11.00 a.m. 1.00 p.m. to 2.00 p.m. 4.00 p.m. to 6.15 p.m. |
| Saturday | 9.00 a.m. to 11.30 a.m. |

 **RECEPTION is OPEN** 

| | |
|------------------|-------------------------|
| Monday to Friday | 8.30 a.m. to 6.30 p.m. |
| Saturday | 9.00 a.m. to 12.00 noon |



For our 24 Hour Emergency Service
PLEASE TELEPHONE KINROSS 863328

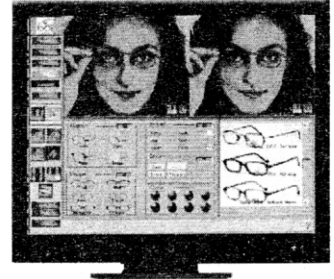
FERRIER & MACKINNON
OPTOMETRISTS

74 High Street, KINROSS KY13 8AJ Tel: 01577 864009
27/29 Chalmers Street, DUNFERMLINE KY12 8AT Tel: 01383 721502

We are a family firm of Optometrists dedicated to professional, quality eyecare.

Introducing our new

**FRAME
IMAGING
SYSTEM**



**SEE YOURSELF WEARING A FRAME BEFORE
YOU ORDER ANY SPECTACLES!**

Why not pop in for a demonstration
- we would be pleased to see you.

Opening Hours: Monday to Friday 9 - 5.30pm
Saturday 9 - 12.30pm

WEBSTER

Building Supplies Ltd

Building & Timber Supplies

A Professional Service to the Building Trade

BRICKS ● BLOCKS
SANDS & GRAVELS ● RED CHIPS
QUARTZ ● ROUGHCASTING
CEMENT ● PLASTERS
PLASTERBOARD ● INSULATION
LINTELS ● TOOLS

Walling ● Pavers ● Kerbs ● Patio
Slabs ● Timber ● Plywood
Velux Windows ● Felt ● Roof Tiles
Drainage ● Butinox
Cuprinol ● Building Chemicals

SUPPLIERS OF MACGAS
MINI DIGGER & SMALL PLANT HIRE

Competitive Prices - Excellent Delivery Service

OPEN WEEKDAYS 7.30 am - 5 pm

SATURDAYS 7.30 am - 1 pm

WISHING ALL CONCERNED A SUCCESSFUL DAY

Ladeside Yard ● Stirling Road ● Milnathort ● Kinross

Tel: 01577 864369 or Fax: 01577 864046

G & W Shand

Builder, Est 1888

**SCHICHALLION
CROOK OF DEVON
KINROSS
KY13 0UL**

Tel: 01577 840538

Mobile: 07850 737501

Builders and Stone Masons

**All domestic and industrial work
undertaken**

New Houses

Extensions

Renovations

Fireplace Specialist

Beavers

Three new boys joined Beavers after the summer holidays, and we welcome Keir, Craig and Adam into the Colony. The leaders of the three lodges are Ben Whiting, Gary Bell and Scott Marsden, and ten boys attend regularly.

The boys have worked towards their Computer badge, have had a messy Hallowe'en party, and a St. Andrew's evening.

The term will end with a visit to the Perth panto on 17 December, and restart on 14 January.

Any boys between 6 and 8 years of age are welcome to join. We meet every Tuesday at 5pm in the hall, so either come along or contact Helen 830351.

Tennis Club

The annual presentation of prizes took place at the recent dinner in the Glenfarg Hotel, with the Norris family having a win in nearly all the competitions.

| | | |
|-------------------|-----------------|-------------------------------------|
| The winners were: | Primary: | Joe Norris |
| | Secondary: | Tom Norris |
| | Ladies Singles: | Marguerite Norris |
| | Gents Singles: | Tom Norris |
| | Ladies Doubles: | Christine Kinloch & Margaret Ponton |
| | Mixed Doubles: | Elsbeth Buchan & Tom Norris |
| | Gents Doubles: | Graham Norris & Steve Whiting |

Thanks to the staff at the Glenfarg hotel for an excellent meal.

Badminton Club

New members will be welcome at the Village Badminton Club, which meets in the Village Hall on Wednesday Evenings from 8 o'clock(ish!), except on the first Wednesday of the month when the hall is used by the Accordion & Fiddle Club. On these evenings the Club plays at Bells Sports Centre. For more information contact Allan Clark 830246

Milnathort Ladies Bridge Club

At the AGM of Milnathort Ladies Bridge Club on Thursday 24 October the following appointments were made: President, Jean Blackwood; Vice President, Sheila Harley; Secretary, Dorothy Pollett.

Meetings are held in the Thistle Hotel on Thursday afternoons at 2pm.

Lady Bridge players of all abilities are welcome to this friendly and sociable afternoon.

For further information please contact Sheila Harley 830319.

Thanks

to all who donated to our collection on 27 July and to those who could not join us on the night but also contributed. The sum of £288.15 was raised in aid of McMillan House. Many thanks, George & Moira Gourdie

Playschool

On Saturday 14 December, the Christmas production, "Tinsel, Turkey and a Tangerine", will take place in the village hall at 10.30am, and everyone is welcome to come along.

The Christmas party, with a visit from Santa, will be held on Thursday 19 December, and all children between the ages of 2 and 5 are welcome, although those between 2 and 2 ½ must be accompanied by an adult.

Playschool is an established partner provider with Perth & Kinross Education Services, meeting their standards and HMI inspections. As such we work within the government's "curriculum framework for children aged 3 to 5". 3 year olds and pre-school children attending three days per week will be eligible for funding.

It has been another successful year for Playschool, building on exciting strengths reiterated by the Care Commission's report —

"the playgroup setting was bright, friendly, positive and welcoming, with children and families valued and respected, and children treated holistically, and encouraged and praised";

"well developed sense of community among all adults present ..."

From 6 January 2003 Glenfarg Village Playschool, will be held on Monday Wednesday and Fridays from 9.30am to 12 noon, and each session will cost £3. (For the rest of this year Playschool will run on five days per week).

Just pop into the Village Hall at 9.30am any week day, or call Joyce on 830353.

Glenfarg Village Folk Club

Meets every Monday at 8.30pm in the Terrace Bar of the Glenfarg Hotel, Glenfarg (01577 830241)

Members £3.00 NonMembers E4.00

NOW A NON-SMOKING VENUE

| | | | |
|-----------|----|---|---|
| November. | 18 | LAURIE BRETT & DONALD GORMAN | Songs both traditional and contemporary from Laurie Brett, with powerful guitar accompaniment. Superb fiddling from ex Semmachie member Donald Gorman. |
| | 25 | THE SANDY WATT QUAICH | Singing competition in memory of one of Glenfarg's great characters. Traditional or contemporary song, the choice is yours. |
| December | 2 | EWEN SUTHERLAND | Very fine guitarist and singer, best known to us here as a member of the Keekin Gless Group. Ewen plays with the Caivanters Ceilidh Band, and plays guitar for Sheena Wellington. |
| | 9 | ANDI NEATE | Singer/songwriter firm the North West coast of Scotland She has been compared with Kirsty McColl and Suzanne Vega, but in truth has her own unique and totally new sound. |
| | 16 | NICK HENESSAY | A fine singer who hails from Cheshire, performing a mix of traditional and contemporary songs and stories. |
| | 23 | SEASONAL SESSION | Join us in the upstairs lounge where everyone can take part in the Christmas cheer. |
| | 30 | A COSY GET -TOGETHER | around the fire to share songs and stories old and new, and maybe even have a wee dram |

Date for the diary: Winter Ceilidh 6th Dec Glenfarg Village Hall with Ewen Sutherland and friends

Best wishes to you all for a Merry Xmas and a Happy New Year

**For further information contact Graham Brotherston 07884 000840 or Doris Rougvie 01738 583698
www.glenfargvillage folkclub.freeserve.co.uk**

E-mail directory

| | |
|------------------------|---------------------------------------|
| Arngask Primary School | headteacher@amgask-primary.pkc.sch.uk |
| Hamilton, Fiona & Ken | Hamilton@glenfarg.swintemet.co.uk |
| McHardy, Jim | Jim.Mchardy@btinternet.com |
| McNeil, Fiona | fiona@fmcneil.greatxscape.net |
| Macpherson, Bill | Bill.Macpherson@glenfeargach.co.uk |
| Macpherson, Jan | Jan.Macpherson@glenfeargach.co.uk |
| Macpherson, Willie | Willie.Macpherson@glenfeargach.co.uk |
| Mattsson, Ake & Joan | mattssons@sol.co.uk |
| Melville, Pierette | pierette@lineone.net |
| Ness, Douglas | jdn@caledonia.org |
| Sadler, Sue | sue@caledonia.org |
| Sutherland, John | john@straitway.co.uk |
| Watt, Dave | dnv@pianotuning.freemove.co.uk |
| Watt, Ineke | ineke@glenfarg2000.freemove.co.uk |

Douglas Ness has also now put the Glenfarg E-Mail directory on his Web site. You can get to the Glenfarg part of his site by entering "<http://www.caledonia.org/glenfarg>" in your browser Address field. To get to the directory follow the link from the top button on the left of the page. To have your own e-mail address added to the directory, send an e-mail to Douglas at Glenfarg@caledonia.org.

Kinross Skip

| | April — September | October — March |
|---------------------------|-------------------|-----------------|
| Monday, Wednesday, Friday | 3 pm - 7 pm | 1 pm — 4 pm |
| Tuesday & Thursday | CLOSED | |
| Saturday & Sunday | 9 am — 7 pm | 9 am - 4 pm |

Dates to remember

| | | | | |
|----------|----|---|-----------------------------------|---------|
| DECEMBER | 6 | Folk Club Winter Ceilidh | Village Hall | |
| | 14 | Playgroup Pantomime | Village Hall | 10.30am |
| | 17 | Red Cross Fashion Show | Queen's Hotel, Leonard St., Perth | 7 pm |
| | 19 | Playgroup Christmas Party | Village Hall | |
| JANUARY | 6 | Community Council meeting | Church Hall | 7.30 pm |
| | 15 | ITEMS FOR NEXT NEWSLETTER PLEASE | | |
| | 20 | Village Hall meeting | | |
| | 24 | Village Bums Supper | | |

Mobile Bank

The Bank of Scotland van visits the village, and stops outside the Glenfarg Hotel, on Tuesdays from 11.15 - 11.40am, and on Fridays from 2.00 - 2.45pm.

Mobile Library

The Library van visits the village on alternate Wednesdays and stops at:

| | | | |
|-----------------|---------------|-----------------|---------------|
| The School | 09.30 - 10.15 | Ladeside (P.O.) | 10.30 - 11.15 |
| Hayfield Road | 10.15 - 10.30 | Main Street | 11.15 - 11.30 |
| Duncrievie Road | 11.35 - 11.50 | | |

With Christmas falling, this year, on a Wednesday when the library is due to call, it might be worth going along on 11 December, when the library should be in the village, and checking the dates for the holiday period.

Newsletter Advertising Rates

Advertising rates for 2002(January - December)

| | | | | | | |
|---------------------|-----------|------|-----------|-----|--------------|-----|
| Annual (6 issues) : | Full page | £120 | Half page | £60 | Quarter page | £30 |
| 1 issue : | Full page | £20 | Half page | £10 | Quarter page | £5 |

All fees for annual advertising to be paid by 28 February.

Single advertisements can only be accepted if paid for at the time of booking

GLENFEARGACH CRAFTS



COT and PRAM COVERS
in colours of your choice.

NOTELETS
choose from

HIGHLAND SCENES, RUGGED COASTLINES,
SEASHORES, SCOTTISH RIVERS or LOCHS,
SUNSETS, SWANS ON LOCH LEVEN,
VARIOUS VIEWS OF GLENFARG,
WATERFALLS, WINTER ON LOCH LEVEN etc.

or have your favourite photo(s) made into notelets

Gift Tags also available

*I am also the village Avon lady, so if I haven't
called on you yet, and you would like me to, please
give me a ring.*

Jan Macpherson 01577 830430
Crafts@glenfeargach.co.uk



A.K.E.

Electrical Contractor

**24 HOUR CALL-OUT
SERVICE
NO CALL-OUT FEE
DISTANCE NO OBJECT
FREE ESTIMATES**

New Installations • Additions
Repairs & Maintenance • Rewires
Car Stereos Fitted • Auto Electrical Repairs
Service & Repair of all types of Electric Heating

Tel 01577 830507
Fax 01577 830661
Mobile 24 hr 0771 892 2829

FAST EFFICIENT SERVICE



McGREGORS FRESH MEAT

**Purveyors of Top Quality Fresh Meats to the
Hotel and Catering Industry.**

**This year celebrating 25 years in the Scottish
Meat Industry.**

**Specially selected from Perthshires top quality
herds.**

**DEEP FREEZE
ORDERS TAKEN**

Call now for info on 01577 830305.



THE MUIRS INN KINROSS

**49 MUIRS, KINROSS KY13 8AU
Tel/Fax: 01577 862270 Email:
themuirsinn@aol.com**

STILL THE 'INN' PLACE TO EAT OUT

NEW
BAR
LUNCH
MENU
WITH
2 COURSES
FOR
ONLY
£5.00

CELEBRATE
EVERY
MONTH
WITH
FLAVOURS OF
THE WORLD
AND
LIVE MUSIC
EVENINGS

NEWLY
REFURBISHED
EN-SUITE
ACCOMMODATION
AVAILABLE
ROOM ONLY,
BED & BREAKFAST
OR
DINNER, BED &
BREAKFAST

HIGH TEAS
SERVED
EVERY
DAY
MON-SAT 5-6PM
SUN 4-6.30PM
FULL & HALF
FAYRE
AVAILABLE

CARVERY
BAR
AVAILABLE AT
WEEKENDS
'A LA CARTE'
SUPPER
MENU
AVAILABLE
7 DAYS

WHAT'S ON 2002 LEAFLET AVAILABLE NOW !!!

**It is a place where you can spend time - not a fortune.
Recommended by an array of Good Beer, Food and Accommodation Guides.**

HEATERS • RADIOS • TOASTERS • WASHING MACHINES • TELEVISIONS • VIDEOS • SATELLITE

IF • TELEPHONES • ACCESSORIES • CAMCORDERS



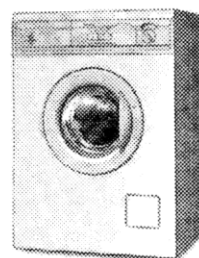
FRIDGE FREEZERS

KINTRONICS

TELEVISION AND VIDEO

KITCHEN APPLIANCE CENTRE

157 HIGH STREET, KINROSS
TEL: 863772

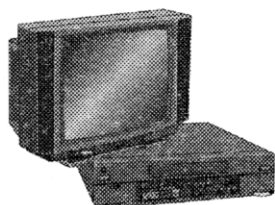


WASHING MACHINES

SALES • RENTAL • SERVICE



SATELLITES



TELEVISIONS & VIDEOS



CLEANERS



COOKERS

 **retra**
The sign of a fair deal

LOW PRICES LOCAL SERVICE



• KETTLES • BATTERIES • ELECTRIC SHAVERS • TAPES • LAMPS • CONNECTORS

PERSONAL CASSETTES • MICROWAVE OVENS • CALCULATORS

ROBERT NICOL



ESTABLISHED 1847

FORMAL AND HIGHLANDWEAR SPECIALISTS

WE TAKE GREAT PRIDE IN OFFERING THE VERY BEST IN HIGHLAND WEAR AND FORMAL WEAR FOR BOTH HIRE AND SALE TO SUIT ALL OCCASIONS.

We specialise in the full Highland Outfit. Our hire range is extensive, offering a superb choice of Kilts, Jackets and Accessories, all chosen for quality and style.

Page Boy outfits include Highland wear for boys 18 months upwards, also morning wear including grey tails/black tails.

Our reputation over the years has been achieved through good old fashioned customer service and civility

Special discounts available for large bookings. Page boys' Highland wear, Formal wear, Evening wear always available.

43 SOUTH METHVEN STREET, PERTH Tel: 01738 639232
53 Bighty Ave, Woodside Way, Glenrothes Tel: 01592 751744
42 Chalmers Street, Dunfermline Tel: 01383 723735