

# THE GLENFARG NEWSLETTER

*Issue 197 December 2011*



**Also inside:**

**Balvaird Castle Doors Open Day**

**Clubs and organisations...and more!**

**SUGGESTED DONATION £1**



## CONTENTS

Contacts.....	3-4
Editorial.....	5
Letters.....	6-7
Church News.....	8-9
Treats for the Troops.....	11
Glenfarg Table Top Sale.....	11
Dates for your Diary.....	13
Community Benefit Fund.....	15
Arngask Primary School News.....	16-18
What a Carry On!.....	20-21
Children's Fun Pages.....	22-23
Binn Farm Gasification Facility.....	25
SWRI News.....	27
Brightening up Duncrrieve.....	29
Cubs & Scouts.....	30-33
Police Box.....	34-35
Tidying up the Avenue.....	36
Bridge over the Farg.....	37
Balvaird Castle Doors Open Day.....	38-40
G&D In Bloom.....	42-43
Recipes.....	46-48
P&KC Info/Press Releases.....	53-55
Abernethy Playgroup.....	61
Glenfarg Folk Club.....	63
Community Council.....	70

### **DEADLINE FOR NEXT ISSUE**

We always try our best to make sure that your newsletter is available promptly at the start of every even month. If you would like to contribute to the February issue, please inform us with details by the 3rd of January to allow us adequate time to plan the issue. Contributions should reach us by 15th of January.

**Thank you.**

*The views expressed by contributors to this newsletter are entirely their own. Publication within this newsletter does not imply that the Editors or Community Council agrees with, or supports, those views. The editors will not be held responsible for any factual inaccuracies, or incorrect inferences drawn.*

# **ADVERTISE IN THE GLENFARG NEWSLETTER**

**You can advertise in the Newsletter for very reasonable rates. Each issue costs:**

**£10 for a full page**

**£5 for a half page**

**£3 for a quarter page (full year £15 - 6 issues for the price of 5!)**

**Advert enquiries should be made by initially contacting the editorial team.**

### **Editorial Team**

Cara Chalmers	830 417
Janet Little	830 531
Emma Roe	830 586
Ineke Watt	830 345
Evelyn Wilkins	830 176

### **NEW EMAIL ADDRESS:**

**Email: [newsletter@glenfargcc.org.uk](mailto:newsletter@glenfargcc.org.uk)**

### **Treasurer**

Gillian Vaughan 830 128

### **Distribution**

Glenfarg Village Store 830 776

### **Cover photographs**

Bridge in Glenfarg Green Restored;  
'The Third Degree' perform at Carry on up the Farg

# Contacts

Service/Organisation	Contact name/ Email address	Telephone
Community Council	Chairperson: Donald MacKenzie	830 255
	Secretary: Janet Watson <i>secretary@glenfargcc.org.uk</i>	830 355
P&K Councillor	Kathleen Baird, Easter Clunie, Newburgh, KY14 6EJ	01337 840 218
Police	Non-emergency contact number (free phone)	0300 111 2222
	Crimestoppers	0800 555 111
Household Utilities	Scottish Water Helpline	0845 601 8855
	Scottish Hydro Electric Helpline	0845 300 999
Arngask Church	Rev Alec Wark (Minister) <i>alecwark@yahoo.co.uk</i>	01738 850 607
	Alex Johnston (Session Clerk) <i>alex@hullion.abelnec.co.uk</i>	830 776
Arngask School	Mrs Lynn Strachan (Head Teacher)	867 250
Accordion & Fiddle	Russell Robertson	830 642
Baby & Toddlers	Lucie Johnston <i>lucie_johnston@yahoo.co.uk</i>	830 801
Badminton Club	Alan Clark	830 246
Dance Connect (Tap/Ballet)	Rachel Webb	07760 972 359
Beavers	Jacqui Macmillan <i>jacqueline.macmillan@tiscali.co.uk</i>	830 155
Bowling Club	Janet Ewart, Kinross <i>janetewart@btinternet.com</i>	863 929
Bridge Club	Jean Ross	830 212
Cubs	Christine Morton	830 210
Curling - Men's	Arthur Jenkins	830 453
Curling - Women's	Margaret Jenkins	830 453

<b>Folk Club</b>	Philip Ponton <i>philip.ponton@btconnect.com</i>	830 239
<b>Football</b>	Alan Fairweather	830 851
<b>Glenfarg &amp; Duncraevie in Bloom</b>	Kate Armstrong	830 343
<b>Glenfarg Oil Buying Syndicate</b>	Dave Arnold <i>kadaver@waitrose.com</i>	830 136
<b>Knit &amp; Natter</b>	Ineke Watt	830 345
<b>Ladies' Badminton</b>	Annette Eadie	830 547
<b>Matthew Dance Academy</b>	Nikki Matthew	07869 120 989
<b>Old Folks Association</b>	Christian Meldrum	830 437
<b>Rainbows &amp; Brownies</b>	Emma McLoughlin <i>glenfargbrownies@gmail.com</i>	07711 909 037
<b>Red Cross</b>	Bill Connolly	830 200
<b>Riding for the Disabled</b>	Angela Stocks	830 262
<b>Scouts</b>	Andrew Vaughan	830 128
<b>Soup &amp; Chat</b>	Lindsay Canard	830 337
<b>Sunday School</b>	Rev Alec Wark (Minister)	01738 850 607
<b>SWRI</b>	Ursula Stewart <i>mac@newtoft.com</i>	830 469
<b>Tennis Club</b>	Sadie Allan <i>s_allan@hotmail.co.uk</i>	830 807
<b>Village Hall</b>	Emma Roe <i>glenfargvillagehallbookings@ gmail.com</i>	830 586
<b>Website</b>	Janet Watson <i>editor@glenfarg.org</i>	830 355
<b>Wine Club</b>	Steve Mee	830 395
<b>Yoga</b>	Caroline Waring	830 239
<b>Zumba</b>	Susan Thomson <i>susiet67zumba@aol.co.uk</i>	07894 834 481

# Editorial



Maybe it's just me, but Christmas sure seems to come around more quickly year-on-year! As I've travelled around the schools I work in over recent weeks, the pumpkins barely consigned to our brown bins, the buzz around Christmas has started in earnest, with talk of shows, concerts and parties (and of course staff 'Secret Santa'!).

Glenfarg is, as usual, a hive of activity leading up to this festive period. Let's just hope last year's Siberian weather is nothing more than a distant memory as we try to put this year's festive plans into action! Check out the dates for your diary on page 13 to see everything from Christmas fairs, to church events, to school shows. Even the village store are getting in on the act and invite you all to a mince pie and mulled wine event to celebrate their first YEAR serving the village (can you believe it? Where does the time go?).

As this issue shows (we have another bumper edition) there has been a plethora of events right here in our little village since the last issue. Take a look through the issue and read about the latest hilarious Wine Club live concert and the Doors Open Day at Balvaire Castle for starters. Then there's the latest news from the village, from the likes of the primary school, cubs and scouts, and Arngask Church. On the subject of news and events, did you know that there are two local websites which you can visit to keep abreast of happenings in the village in between newsletter issues?

Firstly, the general community website: **[www.glenfarg.org](http://www.glenfarg.org)** is being fully updated and is where you can find

local contacts for clubs, groups and services, as well as news and events. The community council also have a separate website for their own news and information at **[www.glenfargcc.org.uk](http://www.glenfargcc.org.uk)**.

With a feeling of *deja vu*, I write this editorial once again saying goodbye, as I end my latest stint as newsletter editor. This time I have decided to completely step down from the team due to other commitments. Ineke Watt and Emma Roe also end their time with the team after this issue and we wish to sincerely thank everyone for their support while we have been part of the editorial team, not least our friends and colleagues, past and present, who have worked on the newsletter with us. It is time to pass the baton on, and Kate Armstrong has kindly volunteered her services as editor. I trust you will continue to support the newsletter with Kate at the helm. You may even wish to join the Glenfarg Newsletter editorial team in some capacity. I'm sure that Kate would be delighted to hear from anyone willing to share their skills.

Finally, over recent issues we have referred to a plan to offer an annual subscription to the newsletter. We are pleased to be able to offer this from the next issue onwards, so please complete the enclosed form and return it as specified to take advantage of this service.

In the meantime, from all on the Glenfarg Newsletter, we wish you a very merry Christmas and a happy and peaceful new year.

***Cara Chalmers***



# Letters

## **Grateful Thanks**

Jim and Janette

Kirkland would like to thank everyone for the cards, good wishes and help during Jim's time in hospital.

the village shop raised £35.72 in the Macmillan box.

A huge thanks to everyone who helped bake, bought home produce to sell and of course ate plenty of delicious cakes.

**Claire Silcock**

Special thanks to Margaret and Julie for their help with dog walking.

**Jim and Janette Kirkland**

---

## **Congratulations...**

to Roy McAiñsh on your 60th birthday. We hope it all went well Roy and that you're enjoying your early retirement and keeping busy with all the little jobs in and around the house, not forgetting the garden.

**All the best from  
Mary, Victoria & Robert**

---

## **Christmas Cards for Sale**

I would like to let you know that you can now purchase Christmas cards, designed by the Glenfarg Brownies and Rainbows. These are now on sale in the Village shop. Thank you.

**Emma McLoughlin**



---

## **Macmillan Coffee Morning**

Thanks to everybody that came and supported the recent Macmillan Coffee morning. We raised a massive £800 including gift aid, plus

---

## **Insurance for Village Groups**

If any group in the village is paying insurance to cover whatever activity they are involved in, they may be a solution to reduce premiums.

John Silcock of Borland Insurance has very kindly volunteered to source competitive cover based on the fact that if several groups ask for cover, there should be some benefit to all.

He has offered to forgo his commission fees for the benefit of the community and to thus reduce the premiums even further.

I am willing to collate any submissions, so if your group is interested in taking this further, please contact me on 830 395 or [stephenmee979@btinternet.com](mailto:stephenmee979@btinternet.com).

**Steve Mee**

---

## **Getting Ready for Winter**

As part of Perth & Kinross Council's preparations for winter a survey of all the grit bins in Glenfarg and Duncricievie was carried out by the

Community Council in early November. As a result some grit bins will be moved to improve access for residents (and for the road teams who have to refill them) and a new one will be provided in Elm Row.

Please remember, these bins are provided for the safety of the community when the snow falls and the roads are covered in ice. If you see anybody stealing the grit or abusing the bins please contact the police or Community Council.

**Dave Arnold**

---

### **Wine Club Concert Success**

It wouldn't be fair to call it Glenfarg's got no talent, because it's not true, and what it doesn't have in talent, it more than makes up for in effort, zeal, commitment and bravery! November 12<sup>th</sup> was something like the 9<sup>th</sup> annual village extravaganza in the hall, and it's quite amazing how this event, this year titled 'Carry On Up The Farg' continues to sparkle.

There were 15 acts, none of them professional, that kept the jam-packed hall spellbound for the best part of 4 hours! Admittedly, they were aided and abetted by Dave Watt who continues to be our faultless musical director, but still, with many of the performers stretching their abilities way past their elastic limit, the contributions were way beyond expectation. Ably and fruitily compered by Sadie and Jayne, the acts took us on cheap flights to Jazz

clubs, doctors' surgeries, Grand Ol' Opreys, beauticians, Las Vegas cabaret evenings, dance halls, nights at the Apollo, and one night stands with iconic black female trios. The night had everything from hot pies to sauce, all washed down with copious quantities of wine.

Well done organisers and performers alike, and well done Glenfarg for accommodating such a fine collection of intrepid entertainers. Lang may yer lum reek.

**Tim Corcoran**

---

### **Glenfarg Oil Buying Syndicate (GOBS) Update**



The Glenfarg Oil Buying Syndicate (GOBS) placed its latest bulk order in early November so members could top up their tanks before the winter gets a grip (and the price of oil goes up?). 50 members ordered a total of nearly 39,000 litres. The price negotiated was 59.75p per litre (inc. VAT). An individual buying 500 litres on the same day would have paid from 65.10p to 70.61p per litre depending on the supplier. Similarly, an individual ordering 1000 litres would have paid between 62.48p and 66.10p per litre.

### **CAN YOU AFFORD NOT TO JOIN?**

If you are interested in joining GOBS, please contact us on 830136 or via e-mail at **kadavar@waitrose.com**.

We look forward to hearing from you.  
**Dave & Kate Arnold**

# Arngask Church News

Yesterday I received in the post the new Fischy Music CD pack for Arngask Primary School, which I will give to Mrs. Strachan. The school now follows the Fischy Music plan, which through music and action promotes values, positive self image and relationships, and prosocial behaviour. The Church made a contribution to the cost of the school playground marking in the summer.



The Church also brought Bibleworld to Bridge of Earn and paid for the transport for pupils. This is what Mrs. Hodgkinson, Principal teacher at Abernethy Primary School, wrote in an email immediately after their visit to Bibleworld:

We have just returned from a visit to mobile Bibleworld at Dunbarney Parish Church and I would like to congratulate you on an excellent resource. Hannah was a superb coordinator and explained everything very well. The children learnt so much through interactive activities and the use of technology. I was also very impressed with the way the

activities could cater for a wide range of academic abilities.

Thank you so much. Children who attended have been excited by the multimedia experience which is designed as an *educational* experience. I worked in the 'Library' and saw children work as a team, problem solve, research topics, and I even introduced pupils to the problems of translating Biblical Hebrew: 89 children from Abernethy benefited from the experience and 7 from Glenfarg.

All of these add up to the ministry of service I have spoken about before in the newsletter.

Also as I write, the Euro is in meltdown, politicians look powerless, there are global

changes in process, and the world may be a different place. In practical terms, look at the cost of food and fuel. Twenty-thousand fellow citizens died last year and energy poverty was a factor. It was into a changing, uncertain world of turmoil that Jesus was born. Let us celebrate Christmas in faith in God's value for humanity, and for each person. This is why we believe God loved the world so much he sent his only Son.

*Rev Alec Wark*

---

### ***Dates for your Diary***

**Sunday 4<sup>th</sup> December 9.30am:**  
Christmas Gift Service

**Wednesday 14<sup>th</sup> December  
7.30pm:** Kirk Session meets at  
Abernethy

**Sunday 18<sup>th</sup> December 9.30am:**  
S Club will perform the Nativity at  
this service.

**Sunday 18<sup>th</sup> December 6.30pm:**  
Christingle Service in Arngask  
Church. Collection in aid of the  
Children's Society (Charity  
Registration 221124)

**Wednesday 21st December  
7.30pm:** Perth Action Churches

Together service in Perth Concert  
Hall.

**Saturday 24<sup>th</sup> December  
(Christmas Eve) 6pm:** Carol  
Service in Glenfarg Village Hall  
followed by a glass of mulled wine  
and a mince pie.


**Saturday 24<sup>th</sup> December  
(Christmas Eve) 11.30pm:**  
Watchnight Service in Arngask  
Church.

**Sunday 25<sup>th</sup> December 9.30am:**  
Short service in Arngask Church.

**Sunday 1<sup>st</sup> January:** Details of  
services to be announced.

**Wednesday 11<sup>th</sup> January  
7.30pm:** Kirk Session meets in  
Arngask Church Hall.

**Sunday 15<sup>th</sup> January 11am:**  
Sunday Club starts in Arngask  
Church Hall.



**Please note Sunday  
morning services in  
Arngask Church will start  
at 11am during 2012.**

# ***A Village "Hall for All"***

The editors' quick guide to regular village hall organisations. Does anything take your interest? Why not come along!

<b>Day</b>	<b>Time</b>	<b>Organisation (contact details if known)</b>
Mondays	9.30am-10.15am	<b>Zumba</b>
	6pm - 7.30pm	<b>Cubs</b>
	8pm-10pm	<b>Ladies' Badminton</b>
Tuesdays	5.15pm-6.15pm	<b>Beavers</b>
	7.30pm-9pm	<b>Yoga</b>
Wednesdays	9.30am-11.30am	<b>Baby &amp; Toddler Group</b>
	6pm -7pm	<b>Rainbows &amp; Brownies</b>
	8pm-10pm (in Winter)	<b>Badminton</b>
1st Wed of month	12.30pm-1.30pm	<b>Soup and Chat</b>
	7pm-11pm	<b>Accordion &amp; Fiddle Club</b>
Thursdays	4pm-6.15pm	<b>Tap</b>
	7.30pm-9pm	<b>Scouts</b>
Saturdays	9.30am-10.15am	<b>Zumba</b>

## Treats for the Troops

The Black Watch (our "local" Regiment) has recently deployed to Afghanistan for another tour of duty.

We have therefore restarted sending them boxes of goodies (when they were last in Afghanistan in 2009 we sent over 120 parcels). If you want to help, we would welcome donations of:

- \* Sweets, chewing gum (not chocolate!)
- \* Magazines (mens/sports/cars/music)
- \* Tablet, biscuits and cakes (but nothing that will melt!)
- \* Tabasco sauce or similar (for spicing up ration packs)
- \* Instant dried meals / small tins of food (big tins are heavy)
- \* Wet wipes
- \* Toothpaste/soap
- \* CDs / DVDs
- \* Paperback books
- \* Anything else you think the troops would like

Please drop them in the donation box in the Glenfarg Village Shop or to us at 4 Lossley Park, Duncricieve. We will then package them up and send them out to Afghanistan.

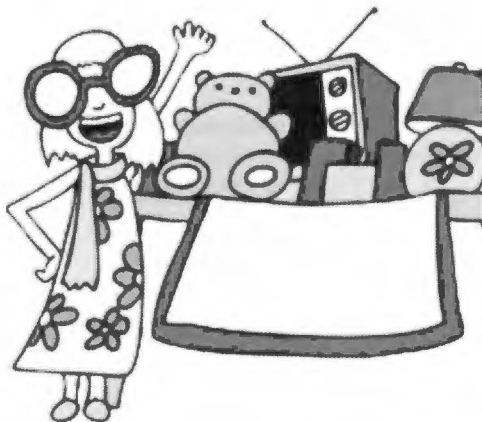
We will be doing this until early next year.

THANKS FOR YOUR SUPPORT.

**Dave & Kate Arnold**  
**Glenfarg 830136**

## Glenfarg Table Top Sale

Glenfarg's first ever Table Top sale or Indoor Car Boot sale was recorded as a success by all eleven participants. The sale, held in the Village Hall in October, was organised by Glenfarg & Duncricieve in Bloom who also served cream teas in the meeting room. The array of goods for sale was extensive with some organisations using the opportunity to promote as well as fund raise through sales. Such was the demand for tables by the



organisations of Glenfarg, that there was no opportunity on this occasion for private individuals to book a "pitch". However, already, another village organisation is planning the next event when such an opportunity may be possible, and the sight of people queueing "round the block" may be seen again.

**Kate Armstrong**

# YOUR LOCAL PLUMBER

**NO CALL OUT CHARGE - NO JOB TOO SMALL  
DISCOUNT FOR SENIOR CITIZENS**

- \* Boilers - New Installations, Repairs and Servicing (OIL, NG & LPG) & Landlords Safety Certificates
- \* Bathrooms - New Installations, Upgrades & Shower Repairs
- \* Central Heating - Radiator valves repaired & replaced, system descale & flush, new radiator installations, Under floor heating, Fitting of gas hobs & cookers
- \* Dripping Taps - Outside Taps - Plumbing in washing machines & dishwashers - Toilet Repairs - Drains etc



**DOUGLAS MILLER**  
**01577 861623**

 **WORCESTER**  
Bosch Group  
Accredited installer

## **Alistair Hutcheson** **Floorlayer**

**All types of flooring supplied and  
installed**

Carpets, Carpet tiles, Domestic and  
Commercial Vinyls  
Karndean, Amtico, Laminates And  
Entrance Matting

Tel. 01577 862876  
Mobile. 07842277590  
Email - alijamhut@aol.com

Flatpack Furniture Assembled  
Prices from just £ 5.00

## **DUNCAN McINTYRE** **Builder and Slater**

TIME SERVED  
TRADESMAN  
**FREE ESTIMATES**  
FOR ALL BUILDING  
WORK  
**SLATING REPAIRS**

**TELEPHONE**  
**KINROSS 864 222**

# Dates for your Diary

Your at-a-glance guide to key dates and events

## *in and around Glenfarg:*

Date & Time	Event	Place and other information
2nd December, 6pm-8pm	Arngask Primary PTA Christmas Fair	Glenfarg Village Hall
Wednesday 14th December	COMMUNITY BENEFIT FUND APPLICATION DEADLINE	
Friday 16th December, 6.30pm	Arngask Primary P4-7 Christmas Panto "Cinderella Rockafella"	Glenfarg Village Hall
Saturday 17th December, 3pm	Celebration Event, Mulled Wine & Mince pies	Glenfarg Village Store
Sunday 18th December, 9.30am	Nativity Service	Arngask Church
Sunday 18th December, 6.30pm	Christingle Service	Arngask Church
Tuesday 20th December, 2pm	Arngask Primary P1-3 Nativity "Whoops-a-daisy Angel"	Arngask Church
Friday 23rd December, 12 noon	ARNGASK PRIMARY SCHOOL TERM ENDS	
Saturday 24th December, 6pm	Carol Service	Glenfarg Village Hall
Saturday 24th December, 11.30pm	Watchnight Service	Arngask Church
Monday 9th January	ARNGASK PRIMARY SCHOOL NEW TERM BEGINS	
Monday 9th January, 7.30pm	Glenfarg Community Council meeting	Glenfarg Village Hall
Sunday 15th January	NEWSLETTER DEADLINE	

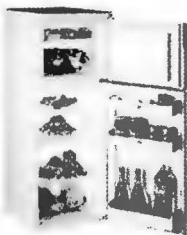
## *Surrounding Areas:*

Friday 9th December - Saturday 7th January	Panto, Jack and the Beanstalk	Perth Theatre <a href="http://www.horsecross.co.uk">www.horsecross.co.uk</a>
Sunday 18th December, 3.30pm/ 6pm	The Bethlehem Experience	Perth Concert Hall <a href="http://www.horsecross.co.uk">www.horsecross.co.uk</a>
Wednesday 21st December, 7.30pm	Perth Action Churches Together service	Perth Concert Hall

We do not have space to mention all events here, but you can visit [www.glenfarg.org](http://www.glenfarg.org) for village information and [www.perthshire.co.uk](http://www.perthshire.co.uk) for further details of county-wide events.

H  
I  
F  
I  
•  
T  
E  
L  
E  
P  
H  
O  
N  
E  
S  
•  
A  
C  
C  
E  
S  
S  
O  
R  
I  
E  
S  
•  
C  
A  
M  
C  
O  
R  
D  
E  
R  
S

P  
E  
R  
S  
O  
N  
A  
L  
•  
C  
A  
S  
S  
E  
T  
T  
E  
S  
•  
M  
I  
C  
R  
O  
W  
A  
V  
E  
O  
V  
E  
N  
•  
C  
A  
L  
C  
U  
L  
A  
T  
O  
R  
S



# KINTRONICS

TELEVISION AND VIDEO

## KITCHEN APPLIANCE CENTRE

157 HIGH STREET, KINROSS  
TEL: 863772



### SALES • RENTAL • SERVICE



Fridge freezers, washing machines,  
televisions, satellites, DVDs and  
videos, cookers, cleaners



## LOW PRICES

## LOCAL SERVICE



• KETTLES • BATTERIES • ELECTRIC SHAVERS • TAPES • LAMPS • CONNECTORS • S

# **LOCHELBANK WIND FARM COMMUNITY BENEFIT FUND**



## **Update – November 2011**

Following the very successful introduction of the Lochelbank Community Benefit Fund (CBF) on 29<sup>th</sup> October in the Church Hall, it was felt that an update on progress would be helpful.

As a recap, the CBF is an index-linked fund, starting at £20,000, paid by the operators of the Lochelbank Wind farm to the communities in whose area it is located, i.e. Glenfarg and Earn Community Council areas. The money comes, of course, from revenue derived from the sale of the electricity generated at the Wind farm and sold throughout the UK. There are, of course, conditions on its use. It must not be used for: advancement of religion or party politics; activities that are the responsibility of statutory authorities; projects benefiting primarily those resident outwith the area of benefit (i.e. Glenfarg and Earn); activities contrary to the interests of RWE npower Renewables Limited or its subsidiaries; activities likely to bring the Foundation, RWE npower Renewables Limited or its subsidiaries into disrepute; anti-renewable energy/wind farm activities and, finally, it cannot be used as retrospective funding (i.e. paying for costs incurred before a decision on an application to the Fund for support has been made).

The good part is that the money is not dependent on the amount of power/revenue generated (which

depends on the wind!); it is a known annual disbursement.

Outwith setting the above conditions, npower has no say in the use of the fund. A registered charity, Scottish Community Foundation (SCF), is charged with administering the Fund. Applications will be made to SCF by interested parties and SCF will check that they comply with the above conditions. Once that has been done the application will be handed to the CBF Panel for a decision on all, partial, or zero funding. The panel will be made up of six residents from within the area, 3 each from Earn and Glenfarg. So all decisions on disbursement will be made locally by local people, and we are glad to say that people in Glenfarg have stepped up to the plate and we have sufficient applications for a full complement from here.

Information on applications, and the application form itself, can be accessed from SCF's Web site at [www.scottishcf.org](http://www.scottishcf.org). Follow the links "Apply for Grant", "Local Programmes", "RWE npower Renewables Lochelbank Community Fund". Applications for the first release of funds should be in by December 14th and will initially be restricted to a £2,000 upper limit.

***Glenfarg Community Council  
CBF Sub-committee***

# ***Arngask Primary School News***

## **Hallowe'en**

We have had a very enjoyable and busy start to Term 2. Our first week back was the last week of October and that could mean only one thing...Hallowe'en was coming. Our fabulous PTA organised another spookily good Hallowe'en Party with lots of traditional games and activities. The pumpkin and fancy dress competitions were judged this year by Joe, Russell and Mark from the Village Shop. Thanks to them also for the fantastic prizes which they donated and which were appreciated hugely by the winners. I know it was a really hard job to choose, but we hope they come again another year!!!

Pumpkin Winners – William, Jemmi-Lee, Mackenzie and Niamh  
Fancy Dress Winners – P1, Robbie, P2 Sasha, P3 Sean and Fergus, P4 Aiden, P5 Oliver, P6 Grant and P7 Murrin

Huge thanks also go to Derek and Jackie Alexander for again donating pumpkins – enough for every family in P1-7. Everyone is very creative and inventive with their pumpkins and it was a delight to see them lit and displayed outside the village hall.

## **Music all around...**

We all enjoy making and taking part in music at Arngask PS. The whole school had the chance to attend a

'Music for Youth' concert at Perth Concert Hall. We all enjoyed the wide variety of music on offer from rock bands to pipers, the Stirling NYCOS Choir, the Scottish Youth Brass Band to music specially created for Hallowe'en. It was wonderful to see the children's reaction to the different styles of music on offer. The children were inspired as we sang every song we could remember all the way back to Glenfarg.

Look out for our own music making in December. P4-7 are putting on a Panto, 'Cinderella, Rockafella'. This will be held in the village hall on Friday 16<sup>th</sup> December at 6.30 and it promises to be a great night out. Look out for posters announcing tickets going on sale. P1-3 are busy learning their songs for this year's nativity 'Whoops-a-daisy Angel'. They will be performing this on Tuesday 20<sup>th</sup> December at 2pm, in the Church. Come and join in us for carol singing afterwards!

## **Citizenship**

Arngask children deserve a lot of praise for their being good citizens. We have a Pupil Council, an Eco – Committee who are leading the school in working towards our 3<sup>rd</sup> Green flag, a Health Group, UNICEF Rights Respecting School Group and Road Safety. All the children take part in some aspect of citizenship including helping to run the tuck shop, litter-picking, gardening,

enterprise and charity activities. This year the World Wildlife Fund was voted Charity of the Year. Each class is raising money to sponsor an animal. P2/3 have just held a second hand book sale and raised £103.11. P4/5 are organising the annual calendar. P6/7 have the annual ceilidh as their enterprise project and P1/2 will be running a mini Christmas Craft Fair in their classroom. As well as being fun and worthwhile, children also learn to work together, plan and organise as well as learning about finance and handling money.

Class topics this term will also include aspects of stewardship and sustainability as part of our ongoing citizenship and Eco Schools work. Classes are being supported in this work through partnership working with the RSPB and the Gannochy Trust.

Arngask is also a Bird Friendly School and this year, P4/5 are leading this initiative. Very many thanks to Mr Stewart Smith who has made us a new bird feeding table as our old one fell into disrepair. P1/2 have been making fat balls ready for the winter.

## **Assemblies Term 2**

This term our theme for assemblies is 'Rights and Responsibilities', including Golden Rules, Wants and Needs, Being a Good Friend/ Respect Me, Giving and Receiving. P4/5 led a very moving and thoughtful 'Poppy Day' assembly on

Remembrance Day. Our Junior Road Safety Team are planning a Road Safety Assembly for the winter nights on the theme of 'Be safe, Be Seen'.  
**Playing, Keeping active and Sport**  
We have a fantastic playground at Arngask PS with a wildlife garden, orchard, pitch and adventure playground. With the financial support of the whole Glenfarg Community we have recently had play markings and court markings laid on the tarmac play area. The children have lots of opportunity for a wide variety of activity and play.

## **Active Schools Activities and Clubs this term include:**

- \* Football Lunchtime Club for P4-7
- \* Golf after school club for P4/5
- \* Taster sessions for all in Judo and Ceilidh Dancing (provided by Kinross-shire Music Festival)
- \* Gardening Club after school club (last session 11<sup>th</sup> Nov)
- \* Choir Lunchtime club for P3-7
- \* Art Lunchtime club for P4-7
- \* Quiet games clubs for P1-3 and P4-7 (different days)
- \* Wild Life Explorer's Lunchtime club for P1-3 (starts Wed 23<sup>rd</sup> Nov)

## **Library**

We have been developing our library over the past few months and it is almost ready to start lending. We are just waiting on our book bags to arrive so that all children can borrow books home to read – when relaxing after all the activity at school!

## Open afternoons

Each term we have planned an open afternoon for parents. The next one is on Thursday 1<sup>st</sup> December. We will be having some Christmas crafts for parents to take part in as well as parents having the chance to look around school and to view their child's work. We also have another Grandparents' Afternoon planned, planned for Friday 8<sup>th</sup> February in 2012, as our first one was so enjoyable.

## PTA Christmas Fair

Coming soon... Friday 2<sup>nd</sup> December

## Christmas Parties

P1-3 - Afternoon of 21<sup>st</sup> December  
Nursery – Morning of 22<sup>nd</sup> December  
P4-7 – Afternoon of 22<sup>nd</sup> December

## Last Day of term...

Friday 23<sup>rd</sup> December, school closes at 12 noon.

Details of all the holidays and closure dates for 2011/12, as well as severe weather information, can be found on Perth and Kinross council's website at:

[www.pkc.gov.uk/Education+and+learning/](http://www.pkc.gov.uk/Education+and+learning/)

## GLENFARG VILLAGE STORE

Russell, Mark and Joe would like to invite you to join us in celebrating our first year serving the Glenfarg Community.

**SATURDAY 17TH DECEMBER FROM 3PM**

**\* Mulled wine and mince pies! \*free Glenfarg store shopping bag!**

**\* Prizes: 1st prize - Glenfiddich 12year old malt!  
2nd prize - £20.00 shopping voucher!  
3rd - Bottle of fizz!**

**Fill in and return the voucher below to enter our free prize draw.**

**Name.....**

**Tel.....**

**Email address.....**

# Glenfarg Village Store

Tel: (01577) 830 201

Open 7am to 7pm  
every day



THE LITTLE SHOP WITH A LOT INSIDE

# What a Carry On!

Glenfarg Village Hall shook with the sound of laughter as the Glenfarg Wine Club and friends took to the stage and presented their annual fund raising concert, this year with the title Carry On Up the Farg. A DVD of the show is being produced which should rival some of the Carry On films of yesteryear. From David Watt's opening chorus right through to The Galloping Major galloping off stage, the multi talented performers entertained a full house. Tribute acts included one named The Third Degree which bore some resemblance to an American female group but the Glenfarg artists were certainly not female! Apart from the comedic acts, of which there were several, there were



also acts of outstanding musical and vocal talent catering for all tastes. This was the eighth such concert held in Glenfarg with all the proceeds going to local charities and organisations. This year's show will fund new strips for the football team, materials for repair of the pedestrian bridge over the the River Farg and a soft play area for the Baby & Toddler



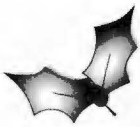


Group. The half-time raffle and auction alone netted over £600, and over £10,000 has now been raised from the eight concerts with beneficiaries ranging from the Village Hall for stage curtains and window blinds, the In Bloom group for planters, Riding for the Disabled for helmets and Anna Gourlay, helping her in her sporting achievements. Already plans are

underway for the 2012 show and with demand for tickets far exceeding the hall's capacity there will likely again be restrictions on the number of tickets per household. Many more photos of the night can be viewed on [www.glenfarg.org](http://www.glenfarg.org).

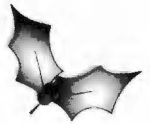
*Kate Armstrong (Wine Club)*





# Christmas Fun Pages

Some entertaining festive activities for the children



## Christmas Riddles!

Try these jokes on your family around the Christmas dinner table!

What do elves learn in school?

*The elf-abet!*

Why does Santa have 3 gardens?

*So he can hoe hoe hoe!*

What do snowmen eat for breakfast?

*Frosties!*

What do you get when you cross a snowman with a vampire?

*Frostbite!*



What kind of candle burns longer, a red candle or a green candle?

*Neither, candles always burn shorter!*

What do you call people who are afraid of Father Christmas?

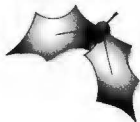
*Claus-trophobic!*



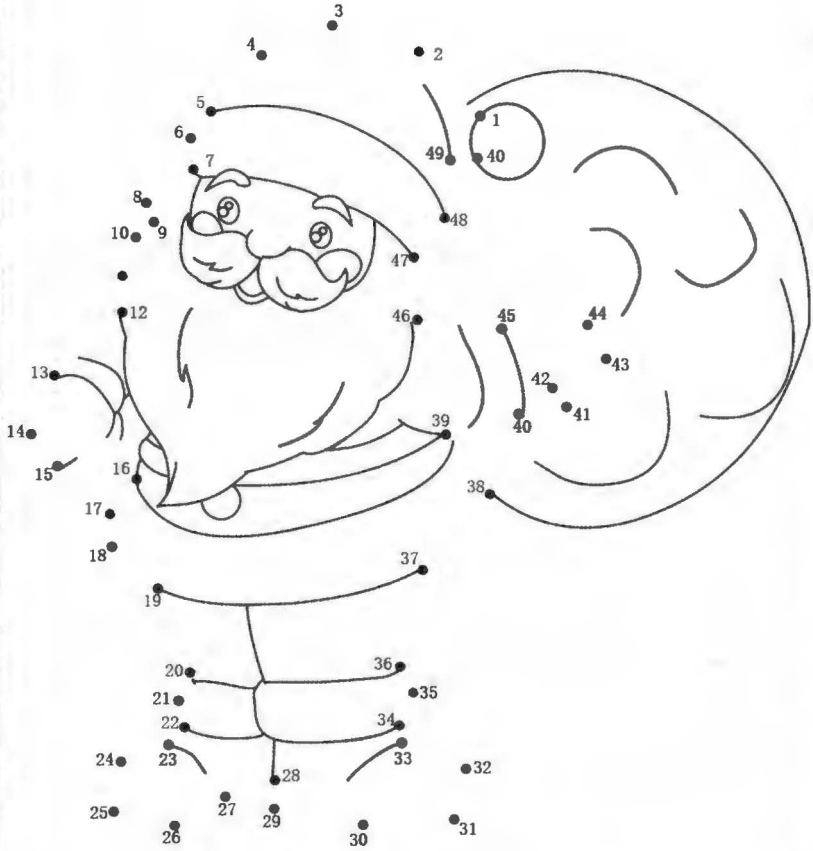
## Christmas Quiz

Test your knowledge of all things Christmas with this multiple choice quiz!  
Answers at the bottom of the opposite page.

- In what country were Christmas cards first sent?
  - USA
  - United Kingdom
  - Norway
- How many days of Christmas are there in the carol?
  - 9
  - 5
  - 12
- What is the name of the famous ballet performed at Christmas?
  - Swan Lake
  - The Nutcracker
  - Sleeping Beauty
- What are you supposed to do under the mistletoe?
  - Dance
  - Kiss
  - Shake hands
- How many reindeer does Santa have?
  - 9
  - 7
  - 8
- Why was the Grinch so mean?
  - no reason
  - he was cold
  - he had a small heart
- What brought Frosty the Snowman to life?
  - magic hat
  - fairy dust
  - wishes
- What was the first ghost in *A Christmas Carol* called?
  - Casper
  - Jacob Marley
  - ghost of Christmas past



Join the dots from 1 to 49 to make this Christmas picture which can then be coloured in!



### Quiz answers

1 - A (This tradition started in Victorian England. The first mass produced cards were created in 1862); 2 - C; 3 - B (It's the story of Clara and the Nutcracker Prince); 4 - B (this tradition started in Norse mythology); 5 - A (They are Dasher, Dancer, Prancer, Blitzen, Vixen, Comet, Cupid, Donner and of course Rudolph); 6 - C (His heart was 3 sizes too small, but it grew when he realised the meaning of Christmas!); 7 - A (When it was put on his head he danced around!); 8 - B (he was Scrooge's business partner)

# Give your feet a Treat



Private podiatry/chiropraxy in  
the comfort of your own  
home.

H.P.C. Registered

Lisa Allison BSc Tel 01577 830678

**SMITH STREET  
MOTORS**

**EST KINROSS 1987**

**MOT TESTING CENTRE**

REPAIRS & SERVICING TO ALL MAKES OF VEHICLES  
**CARS • VANS**

**WINTER OFFER\* 10% OFF MOT'S & SERVICING**  
\*TILL THE END OF FEB 2009

**MOTORCYCLES & QUAD TESTING**

BRAKES • TYRES • EXHAUSTS • BATTERIES • SUSPENSION

**FOR ALL YOUR MOTORING NEEDS**

**T: 01577 864797**  
**M: 07870 595 002**  
**6 SMITH STREET, KINROSS**

**WWW.SMITHSTREETMOTORS.CO.UK**  
**ALL MAJOR CREDIT CARDS ACCEPTED**



# ***Binn Farm Gasification Facility Proposals***

Perth and Kinross Council have approved SITA UK's proposals to develop a gasification facility near Binn Farm at the Binn Eco Innovation Park. The gasification process will recover energy from waste that would otherwise go to the landfill site, extending the life of the landfill site. This replaces plans for an "Energy from Waste" facility at the site using moving grate technology which was granted permission in September 2007.

Up to 60,000 tonnes of waste (mainly municipal waste and a small amount of business waste) per year will be used to generate electricity for the Scottish Grid. That is enough to supply the equivalent of up to 8,000 homes.

This waste is what is left after recyclable items such as plastic, glass, paper, cans etc. have been removed from the waste. The gasification process involves heating the waste to a high temperature in a sealed container to allow the formation of Synthesis Gas from the organic materials and a residual waste containing metals and other non-combustible materials. The Synthesis Gas is burned in a

combustion chamber and the heat generated is used to generate electricity.

Gasification facilities are strictly monitored by organisations such as the Scottish Environment Protection Agency (SEPA) and SITA UK must now apply to SEPA for a permit to operate the facility.

Between 20 to 25 permanent full-time jobs as well as construction opportunities will be created. The proposal forms part of wider plans to develop the Binn Eco Innovation Park led by Binn Skips Ltd. Future plans include other sustainable waste treatment facilities and clean technology businesses will be established on the site.

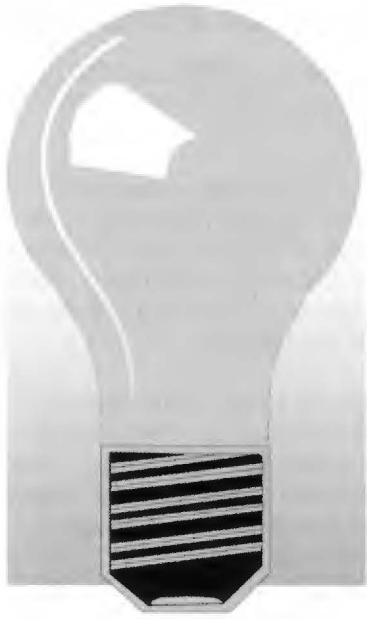
Like other councils in Scotland, Perth and Kinross needs to reduce reliance on landfill for disposal of waste and must work to meet targets set by the Scottish Government. This gasification process is one way of doing something productive with the waste that cannot be recycled and reduces the amount of biodegradable matter in landfill.

Further information about these plans and processes are available on the SITA UK web site: [www.sita.co.uk/your-environment/our-plans](http://www.sita.co.uk/your-environment/our-plans)

***Janet Little***

*(Image courtesy of SITA UK)*





# *John Allison*

## *(electrician)*

*'Ardblair', East Blair,  
Glenfarg, Perth PH2 9QL*

*Tel: 01577 830 678*

*Mobile: 07717 791 484*

*Email: [johnwallison@btinternet.com](mailto:johnwallison@btinternet.com)*

*All types of electrical work undertaken*

*Also:*

*Oil and gas central heating faults ~ Telephones  
Computer network cabling ~ TV aerials and  
distribution ~ Satellite re-alignment, alterations and  
distribution ~ Wall mounted TVs installed*

***FREE ESTIMATES/ADVICE***



# Glenfarg SWRI

## October meeting

With Christmas fast approaching, Frances Drysdale gave the members tips and hints on preparing flowers for a festive occasion. As entertaining as always, Frances's demonstration was an excellent antidote to the winter blues as she talked her way through the choosing and preparation of different kinds of foliage and flowers. She then showed how they could be arranged with some interesting and unusual ideas, which were well received by a good turnout of members and visitors. Mrs Catherine Fairweather gave the vote of thanks.

### Competition winners

#### Christmas Tree decoration:

- 1) Jean Grigg
- 2) Margot Moran
- 3) Allison Messenger

#### Shortbread Biscuits:

- 1) Allison Messenger
- 2) Lesley Murison
- 3) Margot Moran

#### Flower of the Month

- 1) Catherine Fairweather
- 2) Jean Ogilvie
- 3) Helen Quartermaine

**Winner of the Jar of Chutney heat for Gardening Scotland:**  
Catherine Fairweather

## November meeting

Glenfarg continued its festive season preparations with a selection of "tasty bites", puddings and recipes from Sylvia Martin. Much enjoyed by the members, her ideas will no doubt be well used this Christmas.

Mrs Helen Quartermaine proposed the vote of thanks.

### Competition winners

#### Oven Gloves:

- 1) Margaret Scott
- 2) Catherine Fairweather

#### Canapes

- 1) Irene Bettaney
- 2) Linda Stuart
- 3) Margot Moran

#### Flower of the Month

- 1) Margot Moran
- 2) Catherine Fairweather
- 3) Lillias Johnston

Instead of the normal December meeting, many of the members will be going to the pantomime in Perth Theatre instead. This should round the year off well and get us happily into 2012 and another busy year.

**Happy Christmas, everyone!**



- Made to measure kilts & jackets
- Full range of accessories
- Hire specialists with fitting service
- Tuxedos and Dinersuits
- 25 tartans – clan and popular
- Special offers for group bookings. hire 5, 6th goes free
- Page Boy Highland outfits from 18 months
- Traditional and contemporary
- Morningwear



Est. 1847

*Visit us, we shall be happy to guide you on that lifetime purchase or hiring for your special occasion.*



# **ROBERT NICOL LTD**

**Kiltmaker & Highlandwear Specialist**

Perth 43 South Methven Street 01738 639232  
Dunfermline 47 Chalmers Street 01383 723735

# Brightening Up Duncrievie

In the late autumn the residents of Duncrievie decided to brighten up their village. Over several weeks there was a flurry of activity which included:



*A job well done!*

- \* some 4,000 daffodil bulbs being planted on all the road verges through the village. This should result in a spectacular display in the spring. (Assuming, of course, that some of the younger helpers put the bulbs in the right way up!);
- \* wooden plant troughs being made and positioned on Lossley Bridge and through the hamlet. More are planned;
- \* undergrowth on the bridge itself being cut back and the ground levelled ready for grass seeding and shrub planting;
- \* the verges of the footpath leading from Duncrievie to the "Question

Mark" seating area being tidied and planted with shrubs;

- \* the "Question Mark" itself being repaired (following damage by vandals) and the area around it planted with shrubs. The information board was also cleaned and re-varnished;

It would be unfair to name particular individuals as most Duncrievie residents contributed in different ways. Some made the planters, others strimmed the verges or donated or planted bulbs and some simply distributed tea and biscuits and encouragement! So just a big **"thank you"** to all who helped or donated.

Thank you also to Dobbies Garden Centre and Le Jardin Café in Kinross and Robertsons in Milnathort for their support and kind donations.



*The team hard at work*

**Dave Arnold**

## Scout and Cub Camp Ballathie

The cubs and younger scouts were extremely excited and the noise level in the cars kept rising, much to the disgust of the older scouts and Ally, one of the explorers. Niall, the other explorer was plugged into his music and had deaf ears.

Driving along the riverside field track subdued them slightly as the drop into the river was right beside the track. Arriving at the meadow a mist was hanging over the area making it eerie.

Struan and Calum, the patrol leaders, decided where they were pitching their tents and slowly set up their patrol sites.

The tail end of hurricane katia was due so the camp venue had been changed to the very sheltered Ballathie site and the scouts were using hike tents.



*Ben, Fraser and Calum cooking breakfast*



*Michael, Eliot and Grant preparing vegetables*



*Jack watching Fraser and Ben cooking breakfast*

Niall and Ally joined the scouts in cubs to play a wide game – signal sardines, which lasted a long time as Andrew was not hiding in the wood and ended up using his head torch to try and attract the scouts out of

the wood. Saturday morning was damp and it was a struggle to light the fire for breakfast. Fraser and Ben cooked breakfast for Calum's patrol including the speciality dish "scout scrambled eggs". Grant showed his expertise in the kitchen producing a pan of fried eggs to accompany the bacon and black pudding.

Building an obstacle course in the woods occupied the morning and in the afternoon the scouts raced round it first as individuals and then as patrols carrying an improvised Olympic torch.

*Aidan and Eliot watching Struan cooking*



Granny Doris and Grandad Doris were cheered on by both patrols. Struan's patrol "One and four half men" were fastest overall however Ben from "I've lost my chopsticks" was impressive.

After a game of frisbi football where Eliot went flying the fires were relit for cooking the evening meal, chicken tika masala or cowboy parcels. Michael, Grant and Eliot perfected there vegetable preparation skills.

Andrew took the camp for a walk to a local wild beaver site and the evening finished with the camp sitting round the explorer's fire making toast and telling stories.

Once Sunday morning's breakfast of sausage, black pudding, beans and toast was cleared up and daily inspection complete the camp had a game of bucket cricket. Camp was then split into groups for skills bases that included lighting trangias, building gadgets and safe usage of axe and saw.

*Michael and Struan washing the dishes*



Camp was struck after lunch and the final points award for the camp competition resulting for the first time in a draw. Struan took the flag down and the camp walked out along the track beside the Tay which had risen 18 inches while we were there.



*Ally and Niall backwood cooking*

## **Cally Rally 2011**

12 explorers from Perth and Kinross and three scouts travelled to Dochgarroch, 4 miles south of Inverness to join 360 scouts and guides camping beside the Caledonian Canal.

Arriving at half eight at night the site was floodlit or we would have been pitching the tents in the dark. Lights out at midnight is certainly noticeable! The scouts and guides participate in a variety of land and water based activities Saturday morning, afternoon with a scouts own before Sunday morning activities and Adios Cally at the end of camp.

The local explorers and scouts discovered they were all on the same activity and headed off to the Landmark Centre at Carrbridge on Saturday morning. On return to the camp mid afternoon they were either at the murder mystery or at off road cycling, except Jordan who was unable to continue when a pedal fell off his bike.

Evening activities included the casino where they won a prize and the disco.

Before the scout's own the Perth and Kinross contingent played "Ninja" - a fast moving game popular at the world jamboree. Sunday morning activities included crate climbing, prusiking, murder mystery, craft's and cally ha ha. After lunch camp was struck which included for the Perth and Kinross contingent helping to take down the big marquee.

Next year will be the 40<sup>th</sup> rally and more activities are being planned.

# ***Police Box***

## ***Farm Security***

Over the past few weeks there have been a number of thefts from rural farm properties in the Bridge of Earn and Kinross-shire areas.

Farm and plant machinery is very attractive to thieves due to its high value and is routinely reported stolen from farms, building sites and other rural locations. Where possible such machinery should be kept out of view and locked away when not in use. Consideration should also be given to property marking and ensure that all keys are kept in a separate location.

Vehicles such as quad bikes, motorbikes and other 4x4 vehicles are also often subject to thefts. It is advisable to keep such vehicles locked away when not in use. These vehicles should be kept close to occupied farm buildings where practical.

The majority of tools used on farms can easily be lifted and placed within a vehicle, and may not be missed for some time after a crime has taken place. All tools should be property marked, not left lying about and it is also advisable to keep an inventory of tools which can be used for insurance purposes.

Fuel tanks are another regular target for thieves and must be kept locked,

especially where located in remote position.

## ***Annual After Dark Campaign***

During mid-October there were a series of break-ins in the Bridge of Earn and Newburgh areas. With this in mind we are once again appealing to members of the public to heed the home security and crime prevention advice given as part of our annual After Dark Campaign.

As winter sets in residents are being warned that criminals start to capitalise on the shorter days. With the prolonged hours of darkness, comes the increased activity of opportunist thieves. After Dark is aimed at promoting home security and allowing people to feel safe in their own homes during the long winter nights.

Traditionally, the numbers of break-ins go up during the darker nights and we are hoping homeowners will take every step possible to reduce their chances of becoming a victim of crime, by following the crime prevention steps promoted through Operation After Dark.

Over the last few weeks officers will have been carrying out high profile foot and mobile patrols in all parts of Tayside, aimed at preventing the number of house break-ins, and After Dark information cards will be available with advice on simple safety measures to try to combat the criminals.

Top After Dark crime prevention tips include:

- Lock ALL doors, windows, gates, sheds, garages and other outbuildings.
- Put away garden tools and ladders.
- Install an intruder alarm AND REMEMBER TO USE IT.
- Set blinds and curtains to deter “window shopping” – this includes sheds as well.
- Mark valuables with your postcode and house number.
- Get timers for internal lights if you are out in the evenings.
- Fit or check external security lights.
- Finally, be a good neighbour. If you see something suspicious, contact the police immediately!

### ***Neighbourhood Watch***

Neighbourhood Watch (NW) is a community led initiative to bring groups of local people together to address local crime and other community issues. Successful Neighbourhood Watch requires a close liaison between households in a neighbourhood, the local police and the local authority.

Neighbourhood Watches can be large, covering most of the households on an estate, or they might involve just a few houses. They may meet frequently, or only keep in touch via e-mail. There really is no 'One size fits all' approach to Neighbourhood Watch.

What are the benefits of Neighbourhood Watch?

- Areas of local concern can be addressed
- Your problem becomes a shared problem
- People work together to make communities safer
- You can work together with other NW Schemes, the police and other partners
- Opportunity to know your neighbours, local police officers and other service providers
- Being a member of NW may secure a discount on your house insurance

If you are thinking about setting up a Neighbourhood Watch scheme, more information can be obtained by contacting the Association of Scottish Neighbourhood Watches (AoSNW), who are the umbrella body for all schemes in Scotland, either by telephone on 01786 450145 or by visiting their website at [www.aosnw.co.uk](http://www.aosnw.co.uk)

Local Community Officer Euan Mitchell can be contacted at Bridge of Earn Police Office, by telephone on 0300 111 2222, by email on

[euan.mitchell@tayside.pnn.police.uk](mailto:euan.mitchell@tayside.pnn.police.uk)

or by Twitter on [@BridgeOfEarnPC](https://twitter.com/BridgeOfEarnPC). Alternatively you can anonymously contact Crimestoppers on 0800 555 111 to provide information relating to criminal activity of any sort.

# *Tidying up the Avenue*

As the owner of both the Avenue and the plot of land behind the school, I was both upset and delighted to see the changes since my last visit some three years ago. Upset because the swamp at the top of my plot has expanded and the drainage overall in the whole area has become worse. Delighted because the trees I brought from my riding school in Aberdeen have not only taken root but are thriving. The little Beech trees in particular looked beautiful in their autumn finery. By the time you read this little piece I will have already made a small attempt to improve the paths which I found were quite muddy and overgrown upon my last visit at the end of October. You may have even seen and taken advantage of my offer of some free logs which I will advertise in the village store window when we saw up the old dead wood which we intend to remove in November.

As an inattentive landlord, I am happy that as I get older I now have more time to be attentive to the avenue and plot. Without changing its peaceful nature I would like to return it in time to how it was when I was a boy living at Easterton farm with my parents some forty five years ago. To do this I am writing to ask for your help, suggestions and comments, for I value your local knowledge greatly. My intention is simply to remove some of the whin,

gorse and weeds which have become dominant and plant more attractive bushes such as wild cherry and ones which will also encourage birds to take up residence. In this aim I would happily become the recipient of bushes and small trees if you are removing any from your garden or know where I might best buy them. I most certainly need advice from someone who knows about birds and which bushes encourage them to nest and stay. My knowledge only extends to which plants are poisonous to ponies and as I intend to eventually keep two or three ponies on the plot just to keep it in trim those plants must be avoided at all costs.

Finally, I need some local contacts for services. I need a chap with a digger to tidy the avenue up and I need to know where to buy fence posts, as I am told that the cows often break through the March fence between Fordel's field and the avenue. As far as I can see, just a few fence posts might prevent further escapes. Appreciative of your contacting me for whatever reason, my address is John Crawford, Hayfield Riding Centre, Hazlehead Park, Aberdeen AB15 8BB – my E-mail is [john@equi.net](mailto:john@equi.net) and my mobile number is 07768 161 006, but texting me works best as I am most often teaching riders or training horses.

*John Crawford*

# Bridge Over the Farg

After many years of service, the timbers of the pedestrian bridge over the River Farg were succumbing to rot and the retaining bolts were well and truly rusted. But now, thanks to Dennis Adamson, David Aird, John Armstrong and Philip Ponton giving of their time and skill, the bridge is now fully restored and will serve generations to come.



As the bridge is a community asset, the £250 prize for Community Spirit 2010 was put towards the material costs and proceeds from the Wine Club Concert settled the balance of £354. As the photos show, the lads spent an entire Sunday removing all the old

timbers and fittings, drilling and installing the new greenheart timbers. Some of the task involved working under the bridge so wellies were certainly the order of the day and fortunately the river was flowing gently that week. Sustained by coffee & biscuits from



Janette, tea and bacon rolls from Daisy and some sweets from Kate, the lads survived till the end of the day when a celebration pint was enjoyed in the bar. John, Eric Hayward and Andy Fenwick have now fitted the wire cover which ensures that, even in the wet, the bridge is safe to cross.

*Kate Armstrong*

# Balvaird Castle Doors Open Day

The annual Doors Open Day gives free access to hundreds of fascinating buildings across Scotland, many of which are not normally open to the public. In Perth and Kinross, the Heritage Trust coordinated the activities on offer over the weekend of 24<sup>th</sup>-25<sup>th</sup> September 2011.



*Balvaird Castle*

In the area of Glenfarg, there was a rare opportunity to see inside the usually-inaccessible parts of Balvaird Castle. Our local castle is ideal for a short walk and exploration, especially on a fine

wooden door at the foot of the tower has always tantalised me with thoughts of what might be on the other side. So, armed with my camera, I set out to have a look.

It was encouraging to find the car park overflowing, with a steady stream of cars waiting to take the



*The Castle Courtyard*

spaces as they became available. The Historic Scotland board informed us that the castle was the sixteenth century fortified residence of a branch of the Murray family. A short climb up the hill, through the gate

into the courtyard, and the main tower house door stood open to receive visitors. The website had warned that the staircase had no handrail, so people were climbing with care up the stone spiral steps that led to the main hall on the first floor. You arrive in a large room with two impressive fireplaces, alcoves and doorways



*Scotland's earliest flushing toilet perhaps?*



*Admiring the view from the castle*

off. Look up and you see straight through the joists into the rooms above. It is obvious that the building has deteriorated in the past, but we have Historic Scotland to thank for the fact that the tower is standing at all. Back in the '70s they spent over £1 million to stabilise the building, thus ensuring that it is still with us today.

The stone of the tower and surrounding courtyard and gatehouse was all sourced locally. The black stone is volcanic in origin, and the red sandstone was quarried from the area of the Binn Farm site. This has been used to build the large fireplace and the elaborate aumbry(wall cupboard).

In the corner of the Hall is one of those tiny rooms that you step into, exclaim knowingly “Ah yes, the loo!” and quickly step out again. However, have a closer look, because this one is rather special. It is, in fact, the earliest known flushing toilet in a Scottish castle. Water flowing down the channel into the basin allows the ‘contents’ to be flushed away.

But then the Murray family were always at the cutting-edge of technology. It is this that allows the Historic Scotland experts to put such an accurate date (around 1506) on the building of the tower. How can they tell? Well, it’s all in the windows – not the beautiful hall windows, which look out over the landscape, but the lower, defensive windows. At first these were tall, vertical arrow slits, to allow the archer to position the bow, but during the build firearms became the weapon of choice. These required a circular hole, so the plans were changed. Hope they informed the Planning Department!



*View to the upper rooms of Balvaird*

In the rooms at ground level, Historic Scotland have accumulated stones from the courtyard and outer buildings, which their experts are examining in order to create a better plan of how the castle looked originally. So don’t miss the opportunity next September to go along and see for yourself.

***Janet Watson***



*For all aspects of*  
**PIANO TUNING**  
*and repair*  
David R. Watt  
(01577 830 345)

Genuine Hardwood logs by  
the trailer-load or part load.  
Logs cut, split and delivered  
to suit individual needs.



For further  
details ring  
Ewan  
Cheape  
Glenfarg  
830 349



## **CERAMIC TILING SERVICE**

All aspects of tiling  
Supply & fit, or fit only  
Ceramic, mosaic, slate, stone etc  
Over 20 years experience  
Free estimates and expert advice  
Other trades also available

Tel: 01577 862253  
Email: [george@birdenterprise.co.uk](mailto:george@birdenterprise.co.uk)

**Mobile/text: 07764 814385**

# ***Glenfarg & Duncrervie in Bloom***

Another busy Autumn under our belts and this year, with the help of numerous volunteers, the hedges at the Greenbank Road entrance and the boundary shrub hedge between the Hall and the Glenfarg Green have been brought under control. The growth of the hedge by the telephone exchange in just 2 years was over 7 feet! The kind donation of a skip by Binn Skips made the task possible and the brave souls who trampled the cuttings ensured that the skip was well filled by the end of the week.

The begonias produced an excellent long lasting display this year so GDIB are carrying out yet another experiment by attempting to overwinter the corms produced by what were originally plug plants. Similarly an attempt is being made to save some of the fuchsias. If this is successful it will favourably impact on the sustainability of our project. Fingers are also being crossed

that this winter isn't as harsh as last.

GDIB's AGM was held at the end of October and Donald MacKenzie continues as Chairman. Sadly, Sybil Galbraith has given up her duty as Secretary but we are delighted that she will continue to volunteer with the group where her input has been invaluable, especially in keeping on top of the issues presented by the Glenfarg Green. Irene Findlay is Treasurer and Kate Armstrong will take on Secretary's role with Sheila Lownie as Minute Secretary in addition to Watering Rota co-ordinator. In his Chairman's report, Donald praised all who had contributed in any way over the past 12 months but singled out Sybil for her excellent work as secretary and Catriona Donaldson who stayed with the group after her Duke of Edinburgh service. The group's accounts were presented and

GDIB remains in a sound financial position with some excellent fundraising, reduction in costs and invaluable donations from the collection box in the shop, the village fete and private individuals. Donations of diesel and garaging for Monty from Colin Campbell have also been greatly appreciated.

The Train Stop project is nearing completion but the permanent planting has been delayed until Spring when it will have a better

opportunity to become established. The plants chosen have been selected to give all year colour and textures, creating interest for everyone using the lovely seating area. Whilst GDIB have provided £500 to the cost of the project plus given the same amount in kind, this feature is a community asset and it is hoped that the residents of Glenfarg will enjoy it whilst maintaining a safe and attractive place for all to enjoy.

***Kate Armstrong***



**TROUBLE FINDING SOMEONE TO REPAIR  
YOUR LPG or OIL HEATING?**

**Call - AUSTIN HEATING & ELECTRICAL**

A local company for **ALL** your heating needs

Service, Repair and Installation of all  
domestic heating appliances and central  
heating systems

CORGI and OFTEC registered

Visit [www.austinheat.co.uk](http://www.austinheat.co.uk) for further  
details, or call us now on 01577 861188 or  
07786 705261



# VETERINARY SURGEONS

**CAMERON & GREIG MRCVS**

*'Ardmhör', Stirling Road, Milnathort KY13 9XR*



*By appointment only*

Monday - Friday

9 - 10.00am

2 - 3.00pm

6 - 7.00pm

9 - 10.00am

Saturday



Telephone: Kinross 863 494

Website: [www.cameronandgreigvets.co.uk](http://www.cameronandgreigvets.co.uk)

*Large and small animals  
24-hr emergency service*

**RURAL HAVEN EXCLUSIVE  
FOR COUPLES, 3 AUTHENTIC  
ROUND WOOD LOG CABINS.**

**KINROSS. PERTH,  
THE HEART OF SCOTLAND.**

**PRIVATE LARGE ENCLOSED  
OUTDOOR HOT-TUB**

[www.duncriveielogcabins.co.uk](http://www.duncriveielogcabins.co.uk)

**Ph 0845 268 8689,  
[www.hoseasons.co.uk/cottages](http://www.hoseasons.co.uk/cottages)  
property ref, ASHKNOWE S4590,  
new built 2010  
[www.duncriveielogcabins.co.uk](http://www.duncriveielogcabins.co.uk)**

Collect hoseasons/cottage  
brochure at any travel agent.  
Page 27



# **BUILDING & REPAIRS**

Woodmarch Kinnesswood

**Mobile 07773-484-299 or Tel. 01592-840-385**

Plastering

Cornices

Ceramic Tiling

Stonework

Chimneys

Granite Floors

Flat Roofs

Slating

Rhones

Cement Rendering

Brick & Blockwork

Fireplaces

Multifuel Stoves

Cowls

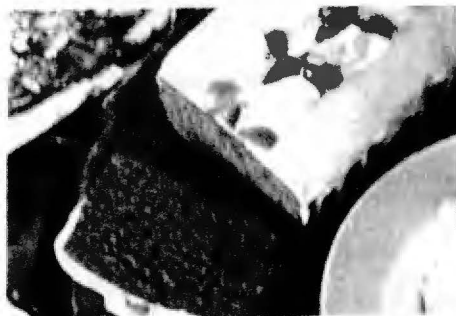
All Work By Apprenticeship Served & Experienced Tradesmen

# Recipes

Everyone will have their own favourite cake recipes for Christmas and ideas for those tempting extras that we find so hard to resist. This gingerbread cake is a favourite - moist and tasty – and can be frozen until needed, prior to finishing off with the icing. Mrs Henderson's Soup is easy to make and tastes good when made with turkey stock; the meat can be varied according to what is in the fridge. Finally, one for the young folks to try out.

## ***Sticky Gingerbread***

8oz/225g plain flour  
2tsp/10ml ground ginger  
1/2tsp/2.5ml bicarbonate of soda  
1/2tsp/2.5ml baking powder  
1/4tsp/1.2ml mixed spice  
3oz/75g butter  
4oz/125g soft brown sugar  
4oz/125g black treacle  
4oz/125g golden syrup  
1/4pint/150ml milk  
1 egg, beaten  
2oz/50g crystallised ginger chopped  
grated zest of 1 lemon



Icing: 2-3tbsp/34-45ml lemon juice, 8oz/225g sieved icing sugar, stem ginger and/or glace fruits to decorate

1. Grease and line 2lb loaf tin. Preheat oven to 325°F/160°C
2. Sieve the first five ingredients together.
3. Gently melt the butter, sugar, treacle and syrup taking care not to overheat or boil. Stir briskly into the dry ingredients followed by the milk, egg, crystallised ginger and lemon zest. Stir until all well mixed together, no pockets of dry mixture remaining.

4. Pour into prepared tin and bake for 45-60 mins, until the cake has risen evenly and is spongy to touch. Remove from oven and let it cool before removing the lining paper. The cake can be frozen at this stage.
5. Icing – warm the lemon juice then mix in the icing sugar until smooth and glossy. Pour over the gingerbread allowing excess to run slowly down the sides. Once the icing is cool and set the cake can be decorate with thinly sliced ginger, cherries, glace fruits, jelly sweets as wished.

### **Mrs Henderson's Soup**

A simple white stock can be made by boiling left-over turkey bones in water for an hour. Remove the bones before using the stock.

- 1oz/25g butter
- 3oz/75g diced bacon or ham or mince
- 1 clove garlic crushed
- 3 leeks sliced
- 1 tin tomatoes chopped
- 2pints/1l white stock
- Salt and pepper to taste
- 3oz/125g brown breadcrumbs

To serve: grated cheddar, chopped parsley, dash of cream

1. Melt the butter in a large pan, add diced meat, garlic and leeks. Cover and simmer gently without browning for 5 mins.
2. Stir in the chopped tomatoes, cover and simmer gently for 10 mins.
3. Add stock and seasoning, cook for 20 mins. then add the breadcrumbs for another 5 mins.
4. Serve as it is or with some grated cheese and parsley and a dash of cream with brown bread or scones.

## Snowballs to Snowmen

2oz/50g butter  
4oz/100g sugar  
3 dessert spoons cocoa  
4 dessert spoons milk  
4oz/100g oats  
4oz/100g coconut  
3oz/75g ready-to-roll icing  
2tbsp/30ml apricot jam (or  
other jam as available)  
Black Liquorice Allsorts



1. **Make the snowballs:** Mix sugar, cocoa, oats and half of the coconut in a bowl. Melt the butter and add to the dry ingredients in the bowl with the milk – mix well. Take a lump of the mixture, about the size of a walnut, and roll into a ball between your hands. Roll in the rest of the coconut and leave on a plate, repeat until all the mixture is used up.
2. **Add the head:** Shape the icing into small balls and stick onto the body with a blob of apricot jam. When the face is dry, paint on nose and eyes with icing pens, or make with edible items to hand.
3. **Top it off** by pressing a piece, or half a piece, of black liquorice allsort on top – moisten the top of the head with a drop of cooled boiled water to stick the hat on.
4. Put the finished snowmen into small paper cases before serving on a plate.

All ingredients are confirmed as available from the village shop so pop in for everything you need to give these dishes a try.

*Janet Little*

# TYREFAIR

## TYREFAIR LIMITED

Unit 11

Bridgend Industrial Estate  
Kinross

There is now a specialist tyre and battery dealer in Kinross that opens every day of the week, and has tyres and batteries at prices to suit your budget. TYREFAIR is a family business, with staff that have many years of professional experience in the tyre trade, and you can find them at **Unit 11, Bridgend Industrial Estate, or telephone on KINROSS 865656**. TYREFAIR welcomes trade account and offers the following goods and services:

- New tyres for cars and vans
- Guaranteed re-treaded tyres
- 4x4 tyres for business and leisure
- High performance tyre specialists
- Wheel alignment
- Top brand quality batteries
- Puncture and Vulcanised repairs
- Number plates made while-you-wait

TYREFAIR has a comfortable lounge, where you can relax while the work is carried out and you can rest assured that we will treat your vehicle with the care and respect that you demand.

**WHY NOT CALL IN, OR TELEPHONE NOW FOR MORE INFORMATION?**

**KINROSS (01577) 865 656**

## FED UP WITH WORKING FROM HOME?

- Furnished offices to let from £199
- Excellent commuting location
- Free use of boardroom
- Excellent facilities
- Flexible terms
- Ideal for the small or start-up business



To view, please call Derek Swan on:

**07773 795 305**

25 Craigie Road, Perth PH2 0BL

## Dog-Gone-Walkin'

**Dog-Walking & Pet Care**

**10 years veterinary nursing experience**

**Insured, References available**

**Claire Murison**  
**BSc(Hons)**

**Tel: 01577 830588 / 07508 268528**

**E-mail: d-g-w@tiscali.co.uk**

# Robertsons

OF MILNATHORT

21/23 New Rd, Milnathort  
Tel: (01577) 863 342

## For all Garden, Farm and Country Needs

DOG FOODS - by WILSONS,  
OMEGA, SPILLERS,  
HAPPIDOG, VITALIN and  
many more.

ANIMAL FEEDS - Free Range  
Poultry Feeds, Goat Mix,  
Pony Nuts & Mixes.

CLOTHING AND FOOTWEAR -  
from MASCOT, JOHN  
PARTRIDGE, HOGGS,  
HUNTER, ARGYLL,  
WELLINGTONS. Also Wet  
Weather Wear.

Full range of garden sundries,  
Wire Netting, Wheelbarrows,  
Weedkillers, Insecticides,  
and Grass seeds at excellent  
prices.

"WE ARE HAPPY TO DELIVER  
AT NO EXTRA COST"

GRAPHIC DESIGN SERVICES  
TO SUIT YOUR NEEDS



logos  
leaflets  
flyers  
bochures  
adverts and  
much more

01577 830345

[www.inekewatt.co.uk](http://www.inekewatt.co.uk)

Tel 01738 635633

**GIRLING &  
FRASER LTD**  
VET PRACTICE

## OPEN 7 DAYS

- First opinion dogs, cats, exotics,  
poultry and smallholding animals
- Onsite hospitalisation, laboratory,  
radiography, ultrasound, endoscopy,  
surgical suite, dental suite, nurse clinics
- Referral services in:
  - dermatology
  - exotics
  - keyhole surgery

Website [www.vetsinperth.com](http://www.vetsinperth.com)



Unit 3 Breadalbane Terrace Perth PH2 8BY  
[mail@vetsinperth.com](mailto:mail@vetsinperth.com)

# Stewart Funeral Directors

14 High Street, KINROSS KY13 8AN  
Tel. (01577) 864607



**Modern Hygienic Preparation Room**  
**Private Family Viewing Suite**  
**24 Hour Personal Service**  
**Specialist Ambulance Transfers**  
**Funeral Planning Consultations**  
**Memorial Sales by Regency Memorials**

**24 Hour Emergency Service Tel. (01577) 864607**

## FERRIER & MACKINNON

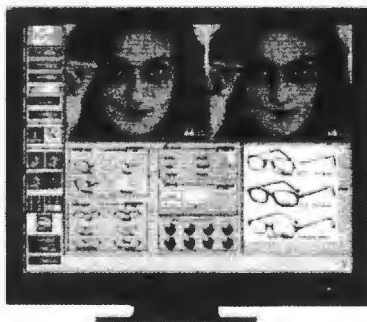
OPTOMETRISTS

74 High Street, KINROSS KY13 8AJ Tel: 01577 864 009  
27/29 Chalmers Street, DUNFERMLINE KY12 8AT Tel: 01383 721 502

We are a family firm of Optometrists dedicated to professional, quality eyecare.

Introducing our new

FRAME  
IMAGING  
SYSTEM

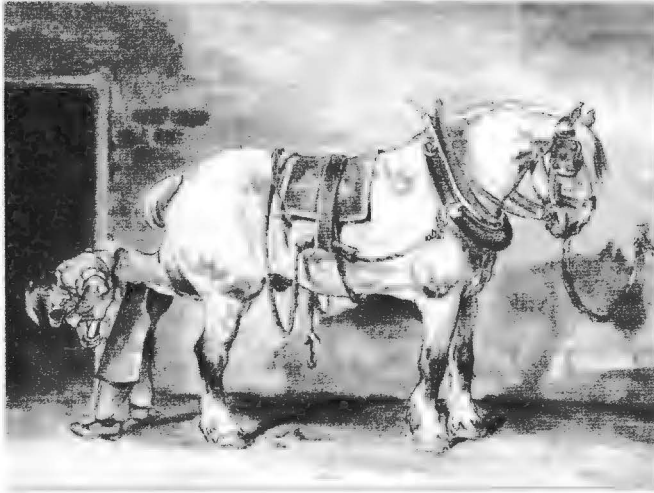


SEE YOURSELF  
WEARING A FRAME  
BEFORE YOU  
ORDER ANY  
SPECTACLES!

WHY NOT POP IN FOR A  
DEMONSTRATION - WE  
WOULD BE PLEASED TO  
SEE YOU.

Opening hours: Monday to Friday 9.00am - 5.30pm  
Saturday 9.00am - 5.00pm

*Colin Gourdie Dip. W.C.F.  
Registered Farrier*



*East Blair Farm, Glenfarg  
Mobile: 07710 439622  
Now working in Perth, Kinross & Fife  
Prompt reliable service assured.*



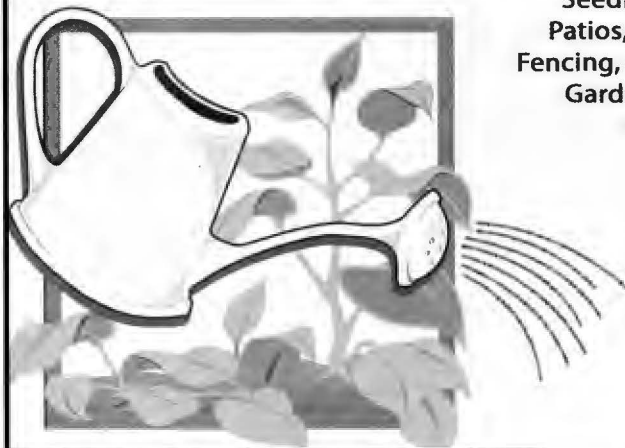
## **Brian Todd Landscapes**

1 Ash Grove, Glenfarg

Contact: 01577 830 728

or 07718 916 318

Seeding, Wall Pointing, Repairs,  
Patios, Driveways, Hedge Cutting,  
Fencing, Gutters cleaned and repaired,  
Garden Maintenance, Slabbing  
& all other odd jobs



**FREE  
ESTIMATES  
COMPETITIVE  
RATES**

**Perth & Kinross Council Press  
Release 5886 09/11/2011**

Perth and Kinross Council has launched the second Community Campus Users' Survey.

There are six community campuses throughout the local area, in Aberfeldy, Blairgowrie, Crieff, Kinross and Perth. Each campus is unique, with its own design and range of services. All campuses are focussed on bringing opportunities and high quality resources to their communities and pupils.

Since their opening, each of the Community Campuses has provided a wide variety of top of the range amenities for local communities and visitors. At the heart of each campus is a new state of the art school. In addition, each campus provides a range of facilities for the wider community. Between them our campuses offer everything from gyms, fitness classes and sports facilities to meeting and conference venues, libraries and catering services. There are also activities and entertainments for all ages in the campus community libraries where available.

Users are always encouraged to feed back about their experiences of the campuses so that services can be adapted where necessary.

Users are invited to complete the online survey which is now open, and is available until Friday 9 December 2011, by going to **[www.pkc.gov.uk/communitycampuses](http://www.pkc.gov.uk/communitycampuses)** and selecting the link for the campus or campuses you use. Findings from the survey will be shared with the local community.

---

**Perth & Kinross Heritage Trust**

Perth and Kinross Heritage Trust is delighted to announce publication of its latest annual report highlighting the varied work in the fields of archaeology, historic buildings and heritage.

Please note that the report can be downloaded as a .pdf at: **<http://www.pkht.org.uk/About-The-Trust/>**

Please contact me directly should you require any further information.

**David Strachan, Manager  
P&K Heritage Trust, 4 York Place  
PERTH, PH2 8EP 01738 477081**



# Loch Leven Community Campus

The Muirs, Kinross KY13 8FQ  
[www.pkc.co.uk](http://www.pkc.co.uk)

*Community Learning & Development Adult Learning*  
*Free local and friendly support with -*

## Basic Computer Tuition

*In small groups at a pace to suit the individual, no prior knowledge of computing is necessary.*

- Get to know the computer
- Using Word for basic documents
- Introduction to the Internet
- Using E-mail

**BOOKING ESSENTIAL**

## English as a Second Language

Would you like to improve your ability to –

- Talk to friends and neighbours
- Understand what people say to you
- Give information
- Talk on the phone
- Fill in a form
- Apply for a job

## Adult Literacy & Numeracy

Reading Writing Spelling Numbers

"I can enjoy books now"

"I feel more confident"

"Filling in forms is less scary"

"I passed my driving test"

If you would like further information regarding any of the tuition please contact:

**Roseanne Gray**  
Adult Learning Worker  
Loch Leven Community Campus  
Email: [rgray@pkc.gov.uk](mailto:rgray@pkc.gov.uk)

Tel: 01577 867216 / 867177





# **Get into The Hub for employability skills**

Perth & Kinross Council's continuing efforts to help local people get into work will take a further step forward from Monday 14th November 2011, with the opening of 'The Hub', a new employment drop-in centre.

The Hub has been set up in conjunction with partner agencies in the Perth & Kinross Employment Connections Partnership and is based in Unit 37b in St John's Shopping Centre, close to the South Street entrance. Expert staff from a range of organisations will be on hand to provide advice. Job vacancies will also be on display.

The Hub has been designed to help job-hunters to boost their employability skills so they can get into and stay in work. Services on offer will include building a CV, letter writing, completing application forms, telephone techniques and mock interviews. Anyone using the centre will also have access to newspapers and computers for job searches, and free stationery and stamps to help with making applications.

Customers are welcome to drop in anytime between 9.30am and 4.30pm Monday to Friday from 14th

November until 31st March 2012. Staff will work with job-hunters to identify any specific support or training they may need.

Enterprise and Infrastructure Convener, Councillor John Kellas, who will officially launch The Hub a week on Monday (21st November), said: "This partnership project is designed to help give residents seeking a job the extra skills they need to achieve this. In the current economic climate and looking to the future, it is crucial for Perth and Kinross that more people get into sustainable employment. The Hub will also be used to signpost people to the relevant organisation if they would like further information on training, volunteering or education opportunities to help them get to a job-ready stage.

"Job vacancies will also be displayed in The Hub and I would welcome and encourage local businesses to promote their vacancies, at no charge, at the centre."

For further information about The Hub, please call 01738 636897.



# HAIR & BEAUTY

**LATE NIGHT OPENING  
TUES & THURS TILL 8PM**

**FULL RANGE OF HAIR & BEAUTY**

**TREATMENTS**

**CUTTING STYLING & COLOURING  
& MUCH MUCH MORE**

**WAXING TANNING  
FACIALS & NAILS  
PHONE FOR OFFERS  
UP TO 20% OFF**

**TEL: 01577 330524  
62 THE MUIRS KINROSS**



# LochLeven

---

# RoofLine

---



- Fascia
- Soffits
- Gutters
- Cladding
- Rhones
- Downpipes
- All Colours

**30% Discount**

Mob: 07802 821 583 Home: 01577 830 269

# Mandy's

OPEN TUES - SAT LATE NIGHT THURSDAY

Mandy Shepherd (formerly of Mandy at James) and her team, including David the Barber, have relocated to 119 High Street, Kinross.

We would like to invite all existing and new clients to indulge themselves in our new luxury fully modern salon. Come and enjoy the serene atmosphere and relax in our new hi-tec Shiatsu Wash Unit.



The ultimate in client comfort, this wash unit takes the client from a sitting to a lying position. It gives a full range of massages for muscular systems, cardio-circulatory system, reflexology, antistress and rebalancing while we cleanse and moisturise your hair and scalp with our new amazing products from Tigi and existing L'Oreal range.



**DAVID  
THE BARBER**

ALL DAY MONDAY  
9am - 5.30pm

Experienced in Hair Art

119 High Street, Kinross  
mandyatjames@hotmail.com

L'ORÉAL PROFESSIONNEL TIGI ghd

God gave you hair - let my angels help you style it

**Tel: 01577 862568**



# THE FAMOUS BEIN INN

**Glenfarg Perth PH2 9PY Tel: 01577 830216**  
**[www.beininn.com](http://www.beininn.com) [enquiries@beininn.com](mailto:enquiries@beininn.com)**

A Family owned Country Inn with 150 years of History,  
The Bein Inn Specialises in Locally Sourced Food,  
prepared with the utmost care,  
Quality Hand Selected Wines and Well Kept Real Ale.

Recently Awarded an AA Rosette 'For Culinary Excellence',  
it is no wonder the Inn was described as  
'A Hidden Gem' by the Sunday Herald.

Food Served All Day, Every Day

Booking in advance Strongly Advised

# ELSTON LANDSCAPE

We provide a comprehensive professional landscape service from design to creation for all sizes of garden.

- Tree and shrub planting, seeding and turfing
- Paths, Patios & Driveways
- Hedge cutting, pruning and tree surgery
- Fencing, trellis & pergolas

## DON'T BE STUMPED!

Unsightly Tree stumps in your way?  
Have them ground away by your local specialist.

Contact KEITH ELSTON

TEL/FAX: 01738 850 742

## GROWING PLACES

Good planning, Design and Selection are a vital part of a planting scheme.

The use of mature trees and shrubs can create an instant effect of established shrubberies, trees and screening.

**ORGANIC COMPOST & MULCHES SUPPLIED & SPREAD.**

**GROW A FENCE**

With so many varieties of hedging to choose from, you can have a colourful and natural fence.

Contact Keith on 01738 850 742  
to discuss design & planting requirements.

# Abernethy Playgroup

Abernethy Playgroup is a self-funded local village playgroup and we desperately need to recruit more children to avoid closure. Due to a number of children graduating to nursery and primary school our numbers have dropped and we now find ourselves looking to recruit from outwith Abernethy in an attempt to increase numbers.

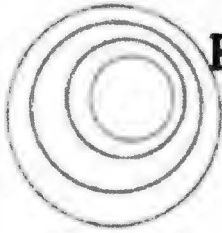
We operate from 9.30 am 'til noon Monday, Wednesday and Friday (although children can attend either one, two or three days, depending on what suits) during term time and group activities are run by our Play Leader and two Play Workers. The cost is £6 per session and we are open to any child between the ages of 2 and 5 years. Parents can also pay an additional £3 for their child(ren) to attend the Playgroup lunch club from noon 'til 12.45 pm, after which the children who attend the local nursery at Abernethy Primary will be escorted there.

This service isn't exclusive to Abernethy kids although any children who don't attend Abernethy Nursery would need to be picked up at 12.30pm.

Our Playgroup exposes the children to early socialisation and helps shy children to come out of their shells. Best of all, we're only 10 minutes down the road! If you would like any further information or would like to discuss the possibility of your child starting with us, please contact our Chairman Rachel Shepherd on 01738 850909 or via email at [raquelrussell@btinternet.com](mailto:raquelrussell@btinternet.com).



Est. 2006



**Richard Tulloch**

- **Plumbing**
- **Cabinet making**
- **Tiling**
- **Kitchens and Bathrooms  
designed and fitted**
- **Home improvements  
specialist**

Greenbank Road  
Glenfarg  
Tel: 01577 830322

**[www.richardtulloch.com](http://www.richardtulloch.com)**

# Glenfarg Folk Club



Unless otherwise stated, events take place in The Glenfarg Hotel, Glenfarg, Perthshire starting at 8.30 pm

***Monday 5th December (Members £5, Non-members £8)***  
***The Ideal Band***

Ken Campbell, Linsey Aitken and Gavin Paterson sing and play a wide variety of instruments including guitars, cello, keyboard and pipes. Their mix of traditional and original material is bound to please all.

***Friday 9th Dec at 8.30 p.m (Entry £7)***  
***Ceilidh Dance***

in Glenfarg Village Hall with Neil and Gail Paterson.

***Monday 12th December (Members £5, Non-members £8)***  
***Tich Frier***

Tich's repertoire includes traditional and modern songs, his own compositions and hilarious parodies, all linked together with his inventive off the cuff stories. Not to be missed!

Contact:

Doris Rougvie, Tel: 01337 831403  
Email: dorisrougvie@hotmail.com

Philip Ponton (contact  
details on page 4)

**Website: [www.glenfargfolkclub.com](http://www.glenfargfolkclub.com)**

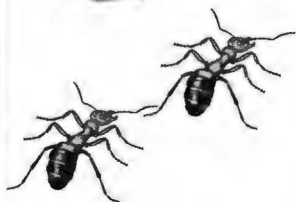
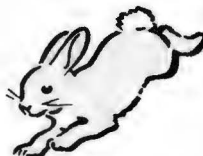
# ANDY LAW



# PEST CONTROL SERVICES



- ✓ MOLES
- ✓ RATS
- ✓ MICE
- ✓ RABBITS
- ✓ WASPS
- ✓ BEES
- ✓ ANTS
- ✓ FLEAS
- ✓ BIRDS
- ✓ BEDBUGS
- ✓ SQUIRRELS
- ✓ FLY CONTROL
- ✓ COCKROACHES
- ✓ BIRD PROOFING
- ✓ INSECT INFESTATIONS



I have 25 years experience in pest control and offer a professional, local and reliable service tailored to your particular pest problem.

Visits just a required or short term, long term and seasonal contracts.

Domestic, Agricultural and Commercial.  
Available evenings, weekends and holidays.

**FREE SURVEYS ALWAYS  
OFFERED**

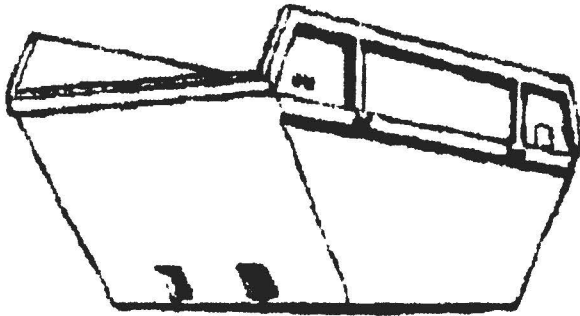
Mobile: 07753 747 444 Home: 01738 813751

19, Dunbarney Avenue, Bridge of Earn, PH2 9BP.





# Binn Skips



Binn Farm • Glenfarg • Perthshire  
PH2 9PX

Tel. 01577 830 833  
Fax. 01577 830 488

# Eles Building Services Ltd

All Trades Building Contractor

Drunzie, Glenfarg, Perthshire, Scotland

Est. 2003

LARGEST ALL-TRADES BUILDING CONTRACTOR  
IN THE LOCAL AREA

~  
SMALL JOBS, MILLION-POUND PROJECTS AND  
EVERYTHING IN BETWEEN UNDERTAKEN,  
DOMESTIC OR COMMERCIAL

~  
FULL SERVICE FROM DESIGN STAGE TO  
MOVE-IN AND MAINTENANCE

NEW BUILDS, HOUSE EXTENSIONS AND INTERIOR DESIGN

~  
FREE ESTIMATES GIVEN

~  
SPECIALISTS IN ENVIRONMENTALLY  
FRIENDLY BUILDING TECHNIQUES

~  
CONSTRUCTIONLINE REGISTERED  
MEMBERS OF THE SCOTTISH BUILDING FEDERATION

[WWW.ELESBUILDING.CO.UK](http://WWW.ELESBUILDING.CO.UK)



CALL Tony Linn – 07717 505401 | Brian Stewart – 07826 946 989 |  
01577 830845

Registered in Scotland No: SC248657

VAT Registration No: 817 3987 89

# **WEBSTER BUILDING SUPPLIES LTD**

*Building and  
Timber  
Supplies*

*Bricks, Blocks, Sand & Gravel, Decorative  
Aggregates, Roughcasting, Plasterboard,  
Pavers, Kerbs, Slabs, Fencing Materials,  
Timber, Plywoods, Drainage,  
Roofing Materials*



*Stockists of FLO GAS. Deliveries  
throughout Tayside and Fife.*

**Ladeside Yard, Stirling Road  
Milnathort KY13 9XR  
Tel: 01577 864369 Fax: 01577 864046**

*tune into your inner music*  
**yoga**

*relaxation*

*stretching*



*every tuesday*  
*in the*  
*glenfarg village hall*

*7.30pm - 9pm*

*contact caroline 01577 830 239*

## **Do you enjoy the Glenfarg Newsletter? Do you look forward to all the local news?**

The newsletter is put together by a team of people just like YOU, so why not join them?

New members of the team are always welcome. The role would involve supporting the Editor to gather together the newsletter content, from news to views, articles to adverts. New ideas are always welcome as we need a spectrum of interests to ensure the Glenfarg Newsletter caters for all.

If you are interested in joining the team,  
send an e-mail to:

**Newsletter@glenfargcc.org.uk**

and we can give you all the details.

## **ALPHAVET VETERINARY CENTRE**

62 MUIRS, KINROSS

For a caring professional service for all domestic pets



**TELEPHONE 01577 863 328**

E-MAIL: [alphavet@alphavet.co.uk](mailto:alphavet@alphavet.co.uk)

WEBSITE: [www.alphavet.co.uk](http://www.alphavet.co.uk)

Scotland's 1st Veterinary Practice Website!

Consultations by appointment

Monday to Friday 9.00am to 12.00 noon  
and 4.00pm to 6.00pm

Saturday 9.00am to 12.00 noon

Reception is open: Monday to Friday 8.30am to 6.30pm  
and Saturday 9.00am to 12.00 noon

***For our 24-hour Emergency Service  
please telephone 01577 863 328***



# **Glenfarg Community Council**

There are no minutes of Glenfarg Community Council in this issue of the Glenfarg Newsletter as Glenfarg Community Council, in line with all Community Councils, now holds elections every 4 years and the date of the first business meeting of the new Council is after the date the Newsletter goes to print. However minutes of all meetings are displayed in the GCC notice Board in Ladeside and on the website:

**[www.glenfargcc.org.uk](http://www.glenfargcc.org.uk)**

At the Extra-ordinary General Meeting on Nov 7th the nominated Community Councillors were duly elected, as were the Officers of GCC. Your new Community Councillors are Janet Watson, Gillian Vaughan, Margaret Ponton, Bill Macpherson, Donald MacKenzie, Alex Johnston, David Arnold and Kate Armstrong.

Perth & Kinross Councillor Kathleen Baird introduced and chaired the meeting until GCC chairperson was proposed. She expressed her thanks to the retiring Chairman Colin Campbell and to the 2 retiring Community Councillors, Charlie Murison and Bill Connolly. Their contributions have been greatly appreciated by the entire community. She went on to congratulate the 8 elected Community Councillors and asked that a member be nominated to take the role of Chairman. CCllr Donald MacKenzie was proposed and he then took over the chair. CCllr Janet Watson was appointed

Secretary and CCllr Gillian Vaughan was appointed Treasurer. The new Constitution, Standing Orders and Code of Conduct were all adopted. The Treasurer reported on the financial status of Glenfarg Community Council which is healthy with £1289.71 available in the General Account. The signatories for all accounts held by GCC are now CCllr MacKenzie (Chairman), CCllr Vaughan (Treasurer) and CCllr Watson (Secretary).

There will be a public meeting of the GCC held in the Village Hall at 7.30pm on Monday 9th January 2012. Please come along and hear all the issues of your community being addressed.



**RENAISSANCE**  
CURTAINS AND ACCESSORIES  
INDIVIDUAL & CREATIVE SOFT  
FURNISHINGS  
HANDMADE TEXTILE EQUIPMENTS  
FABRICS & ACCESSORIES

*Open 10.am 4.pm Mon-Sat.*  
*BackDykes Abernethy*  
*Perth PH2 9JY*  
*Telephone: 01738 850 806*



# **Earnside**

***U.K. & Continental  
Travel***

Tel: 01577 830360

E mail: [info@earnside.com](mailto:info@earnside.com)

Website: [www.earnside.com](http://www.earnside.com)

# **THE GLENFARG HOTEL**

**Introduces Their New Country Fayre Menu**

**Experience our New, Fun and Exciting Menu!**

**Now Serving a Wide Selection of Affordable  
Dishes with Glenfarg Hotel Quality and Warm  
Winter Ambiance**

**New Menu! New Prices!**

**Courtesy Bus Available for Parties of 4 or More**

**Now Open from 17.00 on Sundays!**

**Contact us on 01577 830241**

**EMAIL: [info@glenfarghotel.co.uk](mailto:info@glenfarghotel.co.uk)**

**BOOK NOW FOR HOGMANAY PARTY!**

**GUEST SINGER, NEW BAND, NEW DJ**

**CALL NOW AND RECEIVE YOUR FESTIVE BROCHURE**

# New systems at Loch Leven

From 1st September 2011, Loch Leven health centre are making some changes to the way repeat medication may be ordered. For some time we have had a Repeat Prescription Ordering Line, but many of the messages which were left were incomplete or inaccurate. The Repeat Prescription Ordering Line therefore ceased on 1st September to reduce the risk of errors being made when ordering repeat medication.

We now request that all patients use the right hand side of their prescription, the Reorder Form, to order their repeat medication. This has all the patient's details and details of each item of medication including the dose. Items required should be clearly ticked on the form and the form delivered to us via any of the following methods:-

- Deliver the Reorder Form to the Health Centre - the form may be put in the red box by the Prescriptions Hatch or the grey box outside the front door when we are closed
- Post the Reorder Form to the Health Centre - remember to allow sufficient time for Royal Mail to deliver the prescription to us
- Deliver the Reorder Form to the Kinross or Milnathort pharmacies - Both the pharmacies will accept the Reorder Form and deliver it to us. Again, please allow extra time for this.

Repeat Medication may also be ordered via our Website.

## Loch Leven Health Centre

### Online Services

#### Repeat Medication Manager

##### Not Yet Registered For This Service?

If you have not yet registered for the repeat prescription services, it is a quick and easy process and need only be done once.

[Click Here to Register](#)

##### Already Registered?

If you are already registered, enter your email address and password below and click 'Log On'

Email:

Password:

[Forgot your password?](#)

Log On

Cancel

#### About This Form

If you have already registered for this service then log on here by entering your registered email address and your password.

If you have not yet registered then you need to do so to proceed.



**BOSCH**  
Service



# Glenfarg

**OFT**

Approved code

## **BOSCH CAR SERVICE CENTRE**

- \* Mot
- \* Servicing (including lease cars)
- \* All mechanical repairs
- \* Top quality branded parts



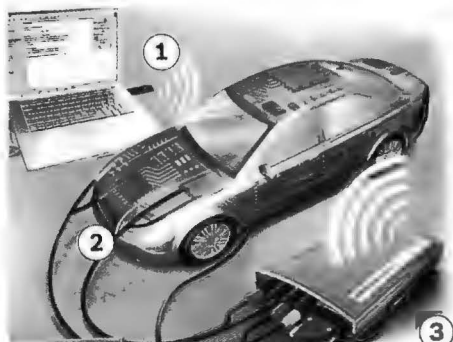
## **DIAGNOSTIC EXPERTS**

Dealer level diagnostics on most makes of vehicle

Reprogramming can be carried out on Landrover, Peugeot, Renault, Citroen, Alfa, Fiat, Rover, Vauxhall, Vag etc



# Garage



## TYRES AND ALIGNMENT

Tyres and exhausts fitted at very competitive prices  
Remember we can still match or even beat the 'fast fits' on many tyre and exhaust prices including fitting and balance.  
**Latest computerised 4-wheel alignment system (only 3 in Tayside)**

## AIR CONDITIONING SYSTEMS

checked and repaired (This should be done every 2 years)

**And remember... since block exemption came in October 2003, all cars (including new) can be serviced by us without invalidating the warranty. That could mean up to 50% saving on main dealer prices!**

**Phone for a fast and friendly estimate**

**01577 830 633**

# GENERAL INFORMATION

## Doctors Surgeries

Loch Leven Health Centre, Muirs, Kinross - 01577 862 112  
Out of Hours linked with NHS 24 - 01577 865 252  
The Surgery, Main Street, Bridge of Earn - 01738 812 000  
NHS 24 Out of Hours - 08454 242 424

## Mobile Services

### Library

The van visits the village on alternate  
Wednesdays: 7th & 21st December 9th  
& 23rd November, and stops at:



### Bank of Scotland

Stops at Glenfarg Hotel  
every Tuesday 10.45-11.00

### Mobile Post Office

Stops outside the Old  
Joiner's workshop,  
Ladeside, on the following  
days and times:  
Mon 11am-12noon; Tues 12.45pm-  
2.15pm; Thurs 11am-12noon; Fri  
12.45pm-2.15pm



Arngask Primary  
School; 09.30-10.15  
Hayfield Road: 10.15-10.30  
Ladeside: 10.30-11.15  
Main Street: 11.15-11.30  
Duncricvie: 11.35-11.50



## Recycling

### Recycling Points

Glenfarg: Arngask School car park for cans, paper and glass  
Kinross: Causeway Car Park, Sainsbury's, Station Road, for cans, glass, paper and  
textiles  
Bridgend Industrial Estate Open Mon-Fri 9am-7pm, Sat-Sun 9am-5pm  
Milnathort: Thistle Inn, Black Loan for cans, glass and paper  
Orwell & Portmoak Church Office for cans, plastic, paper and ink  
cartridges  
Perth: Tesco, Edinburgh Road for cans, glass, paper, textiles and books

## Kerbside Recycling Service: Waste Collection Dates

### Glenfarg

Green lidded bin (**Non-recyclable waste**): Mondays 12th & 26th December 2011;  
9th & 23rd January 2012  
Blue lidded bin (**Paper, cardboard, cans, plastic**): Mondays 5th &  
19th December 2011; 2nd, 16th & 30th January 2012  
Brown lidded bin (**Garden & food waste**): Thursdays 1st & 15th  
December 2011; 12th & 26th January 2012

### Duncricvie

Green lidded bin (**Non-recyclable waste**): Thursdays 1st, 15th  
& 29th December 2011; 12th & 26th January 2012  
Blue lidded bin (**Paper, cardboard, cans, plastic**): Thursdays 8th &  
22nd December 2011; 5th & 19th January 2012  
Brown lidded bin (**Garden & food waste**): Saturdays 3rd & 17th December 2011;  
14th & 28th January 2012

